

Jeep / Eagle 1978-1998 1/2

Model 30 /181 Front Axles for

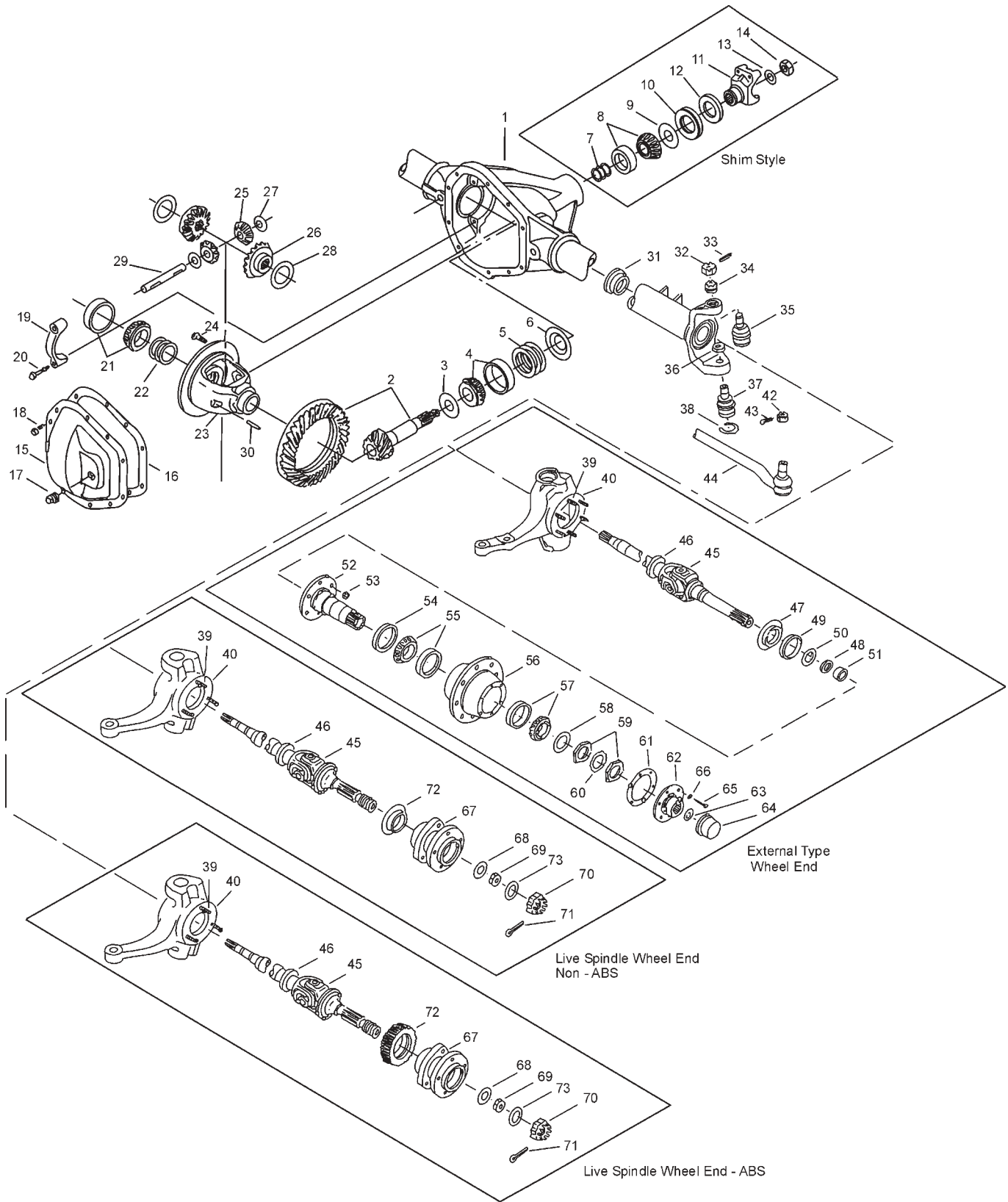
XJ (Cherokee /Comanche)

YJ /TJ (Wrangler)

ZJ (Grand Cherokee)

CJ (Civilian Jeep)

Jeep Model 30 /181 Front Exploded View



Jeep Model 30 /181 Front Parts Listing

ITEM NO.	PART NUMBER	DESCRIPTION	ITEM NO.	PART NUMBER	DESCRIPTION
1	— ⁽³⁾	Housing – Axle Service	34	— ⁽²⁾	Adjusting Split Ring
2	— ⁽¹⁾	Drive Gear & Pinion Assembly	35	— ⁽²⁾	Socket Assembly
3	30764	Slinger – Inner Pinion Bearing	36	— ⁽²⁾	Nut – Hex Jam / Slotted
4	706015X	KIT – Inner Pinion Bearing	37	— ⁽²⁾	Socket Assembly
	706938X	PKG – Diff & Pinion Bearing Shim (inc items 5, 7, 12, 13, 16, 22)	38	— ⁽²⁾	Snap Ring
	706936X	PKG – Pinion Bearing Shim (inc items 5, 7, 12, 13, 16)	39	— ⁽²⁾	Bolt – Knuckle
5	—	Inner Pinion Bearing Shims (see shim packages)	40	— ⁽²⁾	Right Knuckle
			41	— ⁽²⁾	Left Knuckle
6	32349	Baffle – Pinion Bearing	42	— ⁽³⁾	Nut – Hex Slotted
7	—	Outer Pinion Bearing Shims (see shim packages)	43	— ⁽³⁾	Cotter Pin
8	706030X	KIT – Outer Pinion Bearing	44	— ⁽⁵⁾	Tie Rod Assembly
9	13575	Slinger – Outer Pinion Bearing	45	— ⁽¹⁾	Shaft & Joint Assembly
10	— ⁽²⁾	Seal – Pinion Oil	46	— ⁽²⁾	Slinger – Spindle Yoke (Inner)
11	— ⁽²⁾	End Yoke or Assembly (inc 12)	47	— ⁽²⁾	Slinger – Spindle Yoke (Outer)
12	— ⁽²⁾	Slinger – End Yoke		— ⁽²⁾	KIT – Spindle Seal & Bearing (inc items 48, 49, 50, 51)
13	30186	Washer – Pinion Nut		— ⁽²⁾	KIT – Spindle (inc items 48, 49, 50, 51, 52)
14	30185	Pinion Nut	48	— ⁽²⁾	Oil Seal
	— ⁽²⁾	KIT – Carrier Cover (inc item 15, 16, 17, 18)	49	— ⁽²⁾	Oil Seal (block vee)
15	— ⁽²⁾	Carrier Cover	50	— ⁽²⁾	Spacer – Wheel Bearing Spindle
16	— ⁽²⁾	Gasket/RTV Silicone Sealant	51	— ⁽²⁾	Needle Bearing Assembly
17	— ⁽²⁾	Plug – Carrier Cover	52	— ⁽²⁾	Spindle – Wheel Bearing
18	34279	Bolt – Carrier Cover	53	— ⁽³⁾	Nut – Brake Mounting
19	— ⁽³⁾	Differential Bearing Cap	54	— ⁽³⁾	Oil Seal
20	48631-1	Bolt – Differential Bearing Cap	55	— ⁽²⁾	KIT – Inner Wheel Bearing
21	706016X	KIT – Differential Bearing	56	— ⁽³⁾	Wheel Hub
22	706937X	KIT – Differential Brg Shim (inc items 16, 54, 55, 63,70)	57	— ⁽²⁾	KIT – Outer Wheel Bearing
23	— ⁽⁴⁾	Case – Differential (std)	58	— ⁽²⁾	Lockwasher – Wheel Bearing
24	41221	Bolt – Drive Gear (qty 10)	59	— ⁽²⁾	Nut – Wheel Bearing
25	32926	Pinion – Differential (std)	60	— ⁽²⁾	Lockwasher – Wheel Bearing Nut
26	— ⁽²⁾	Gear – Differential (std)	61	— ⁽²⁾	Gasket – Drive Flange
27	34096	Thrustwasher – Diff Pinion (std)	62	— ⁽²⁾	Flange – Axle Drive
28	— ⁽²⁾	Thrustwasher – Diff Gear (std)	63	— ⁽²⁾	Snap Ring
29	41648	Shaft – Differential (std)	64	— ⁽²⁾	Hub Cap
30	13449	Lock – Differential Shaft	65	— ⁽³⁾	Bolt
31	46470	Oil Seal	66	— ⁽²⁾	Lockwasher
	— ⁽²⁾	KIT – Right Knuckle Assembly	67	— ⁽²⁾	Hub Assembly
	— ⁽²⁾	KIT – Left Knuckle Assembly	68	40596	Washer – Flat
	— ⁽²⁾	KIT – Socket Assembly	69	40597	Nut – Hex
32	— ⁽²⁾	Nut – Slotted	70	40598	Retainer Nut
33	500024-6	Cotter Pin	71	500025-10	Cotter Pin
			72	— ⁽²⁾	Tone Ring (ABS)/Slinger
			73	— ⁽²⁾	Spring – Wave Washer

(1) See "Bill of Material Table" on next page

(2) See "Variable Parts Table" within this section

(3) Contact Vehicle Manufacturer

(4) Not Sold Separately

(5) See Spicer Chassis Catalog for part number and additional steering parts

Jeep Model 30 /181 Front Bill of Material Table

Axle			Axle Kits				Shaft & Joint Assy.	
Bill of Material	Diff. Type	Ratio	Ring Gear & Pinion Kit ⁽⁷⁾	Differential			Right Hand Shaft Assy.	Left Hand Shaft Assy.
				Case Assy. Kit ⁽⁸⁾	Case Kit	Inner Parts Kit		
1978 CJ5/CJ7 - External Type Wheel End								
603732-2	Standard	3.54	706503-2X	706003X	706007X	706010X	28179-3X	28179-4X
603732-3	Standard	4.10	706503-4X	706004X	706008X	706010X	28179-3X	28179-4X
603732-4	Standard	4.10	706503-4X	706004X	706008X	706010X	28179-3X	28179-4X
603732-5	Standard	3.54	706503-2X	706003X	706007X	706010X	28179-3X	28179-4X
1979 CJ5/CJ7 - External Type Wheel End								
610053-1	Standard	3.07	706503-10X	706003X	706007X	706010X	28179-3X	28179-4X
610053-2	Standard	3.54	706503-2X	706003X	706007X	706010X	28179-3X	28179-4X
610053-3	Standard	4.10	706503-4X	706004X	706008X	706010X	28179-3X	28179-4X
610053-4	Standard	4.10	706503-4X	706004X	706008X	706010X	28179-3X	28179-4X
610053-5	Standard	3.54	706503-2X	706003X	706007X	706010X	28179-3X	28179-4X
610053-6	Standard	3.07	706503-10X	706003X	706007X	706010X	28179-3X	28179-4X
1980 CJ5/CJ7 - External Type Wheel End								
610086-1	Standard	3.07	706503-10X	706003X	706007X	706010X	28179-3X	28179-4X
610086-2	Standard	3.54	706503-2X	706003X	706007X	706010X	28179-3X	28179-4X
610086-3	Standard	4.10	706503-4X	706004X	706008X	706010X	28179-3X	28179-4X
610086-4	Standard	4.10	706503-4X	706004X	706008X	706010X	28179-3X	28179-4X
610086-5	Standard	3.54	706503-2X	706003X	706007X	706010X	28179-3X	28179-4X
610086-10	Standard	2.72	700128-2	706003X	706007X	706010X	28179-3X	28179-4X
610086-11	Standard	2.72	700128-2	706003X	706007X	706010X	28179-3X	28179-4X
610086-12	Standard	3.07	706503-10X	706003X	706007X	706010X	28179-3X	28179-4X
1981 CJ5/CJ7 - External Type Wheel End								
610136-1	Standard	3.73	706503-3X	706004X	706008X	706010X	28179-3X	28179-4X
610136-2	Standard	3.73	706503-3X	706004X	706008X	706010X	28179-3X	28179-4X
610136-3	Standard	3.31	706503-1X	706003X	706007X	706010X	28179-3X	28179-4X
610136-4	Standard	3.31	706503-1X	706003X	706007X	706010X	28179-3X	28179-4X
610136-5	Standard	2.72	700128-2	706003X	706007X	706010X	28179-3X	28179-4X
610136-6	Standard	2.72	700128-2	706003X	706007X	706010X	28179-3X	28179-4X
610136-7	Standard	3.54	706503-2X	706003X	706007X	706010X	28179-3X	28179-4X
1981 1/2 CJ5/CJ7 - External Type Wheel End								
610154-1	Standard	2.72	700128-2	706003X	706007X	706010X	28179-3X	28179-4X
610154-2	Standard	3.31	706503-1X	706003X	706007X	706010X	28179-3X	28179-4X
610154-3	Standard	3.73	706503-3X	706004X	706007X	706010X	28179-3X	28179-4X
610154-4	Standard	3.73	706503-3X	706004X	706007X	706010X	28179-3X	28179-4X
610154-5	Standard	3.31	706503-1X	706003X	706007X	706010X	28179-3X	28179-4X
610154-6	Standard	2.72	700128-2	706003X	706007X	706010X	28179-3X	28179-4X
610154-7	Standard	3.54	706503-2X	706003X	706007X	706010X	28179-3X	28179-4X
1982-83 CJ5 - External Type Wheel End								
610156-1	Standard	2.72	700128-2	706003X	706007X	706010X	28179-3X	28179-4X
610156-2	Standard	3.31	706503-1X	706003X	706007X	706010X	28179-3X	28179-4X
610156-5	Standard	3.31	706503-1X	706003X	706007X	706010X	28179-3X	28179-4X
610156-6	Standard	2.72	700128-2	706003X	706007X	706010X	28179-3X	28179-4X
610156-7	Standard	3.54	706503-2X	706003X	706007X	706010X	28179-3X	28179-4X
610156-8	Standard	4.10	706503-4X	706004X	706008X	706010X	28179-3X	28179-4X
610156-9	Standard	4.10	706503-4X	706004X	706008X	706010X	28179-3X	28179-4X
610156-10	Standard	4.56	706503-5X	706004X	706008X	706010X	28179-3X	28179-4X

NOTE: All Ring & Pinion Kits with base number 706930 are reverse spiral bevel
 (7) See Ring Gear & Pinion Kits in XGI Catalog for ratio & tooth combinations.
 (8) See Differential Case Assy Kits in XGI Catalog for spline data & ratios.

Jeep Model 30 /181 Front Bill of Material Table

Axle			Axle Kits				Shaft & Joint Assy.	
Bill of Material	Diff. Type	Ratio	Ring Gear & Pinion Kit ⁽⁷⁾	Differential			Right Hand Shaft Assy.	Left Hand Shaft Assy.
				Case Assy. Kit ⁽⁸⁾	Case Kit	Inner Parts Kit		
1982-87 CJ7/CJ8 - External Type Wheel End								
610164-1	Standard	2.72	700128-2	706003X	706007X	706010X	28179-7X	28179-8X
610164-2	Standard	3.31	706503-1X	706003X	706007X	706010X	28179-7X	28179-8X
610164-5	Standard	3.31	706503-1X	706003X	706007X	706010X	28179-7X	28179-8X
610164-6	Standard	2.72	700128-2	706003X	706007X	706010X	28179-7X	28179-8X
610164-7	Standard	3.54	706503-2X	706003X	706007X	706010X	28179-7X	28179-8X
610164-8	Standard	4.10	706503-4X	706004X	706008X	706010X	28179-7X	28179-8X
610164-9	Standard	4.10	706503-4X	706004X	706008X	706010X	28179-7X	28179-8X
610164-10	Standard	4.56	706503-5X	706004X	706008X	706010X	28179-7X	28179-8X
610164-11	Standard	4.56	706503-5X	706004X	706008X	706010X	28179-7X	28179-8X
1985 XJ Non-Disconnect, Cardan - Live Spindle Wheel End								
610206-1	Standard	3.73	706930-5X	706932X	706934X	706935X	75814-2X	75814-1X
610206-5	Standard	3.31	706930-3X	706931X	706933X	706935X	75814-2X	75814-1X
1985 XJ Non-Disconnect, CV, System Sentry - Live Spindle Wheel End								
610221-1	Standard	3.73	706930-5X	706932X	706934X	706935X	75814-2X	75814-1X
610221-5	Standard	3.31	706930-3X	706931X	706933X	706935X	75814-2X	75814-1X
610221-7	Standard	3.54	706930-8X	706931X	706933X	706935X	75814-2X	75814-1X
610221-11	Standard	4.10	706930-4X	706932X	706934X	706935X	75814-2X	75814-1X
1985 XJ 4X2, System Sentry (Dead Front)								
610237	-	-	-	-	-	-	-	-
1985-86 XJ Non-Disconnect, CV - Live Spindle Wheel End								
610222-1	Standard	3.54	706930-8X	706931X	706933X	706935X	75814-2X	75814-1X
610222-2	Standard	3.73	706930-5X	706932X	706934X	706935X	75814-2X	75814-1X
610222-3	Standard	4.10	706930-4X	706932X	706934X	706935X	75814-2X	75814-1X
610222-9	Standard	3.31	706930-3X	706931X	706933X	706935X	75814-2X	75814-1X
610222-19	Standard	3.73	706930-5X	706931X	706934X	706935X	75814-2X	75814-1X
1985-86 XJ 4X2, System Sentry (Dead Front)								
610234	-	-	-	-	-	-	-	-
1985-87 XJ Non-Disconnect, Cardan - Live Spindle Wheel End								
610183-1	Standard	3.54	706930-8X	706931X	706933X	706935X	75814-2X	75814-1X
610183-2	Standard	3.73	706930-5X	706932X	706934X	706935X	75814-2X	75814-1X
610183-3	Standard	4.10	706930-4X	706932X	706934X	706935X	75814-2X	75814-1X
610183-5	Standard	4.56	706930-6X	706932X	706934X	706935X	75814-2X	75814-1X
610183-8	Standard	3.07	706930-2X	706931X	706933X	706935X	75814-2X	75814-1X
610183-9	Standard	3.31	706930-3X	706931X	706933X	706935X	75814-2X	75814-1X
1986 CJ7, LH Steering - External Type Wheel End								
610244-1	Standard	2.72	700128-2	706003X	706007X	706010X	28179-7X	28179-8X
610244-2	Standard	3.31	706503-1X	706003X	706007X	706010X	28179-7X	28179-8X
610244-5	Standard	3.31	706503-1X	706003X	706007X	706010X	28179-7X	28179-8X
610244-6	Standard	2.72	700128-2	706003X	706007X	706010X	28179-7X	28179-8X
610244-7	Standard	3.54	706503-2X	706003X	706007X	706010X	28179-7X	28179-8X
610244-8	Standard	4.10	706503-4X	706004X	706008X	706010X	28179-7X	28179-8X
610244-9	Standard	4.10	706503-4X	706004X	706008X	706010X	28179-7X	28179-8X
610244-10	Standard	4.56	706503-5X	706004X	706008X	706010X	28179-7X	28179-8X
610244-12	Standard	2.72	700128-2	706003X	706007X	706010X	28179-7X	28179-8X
610244-13	Standard	3.31	706503-1X	706003X	706007X	706010X	28179-7X	28179-8X
610244-16	Standard	3.31	706503-1X	706003X	706007X	706010X	28179-7X	28179-8X
610244-17	Standard	2.72	700128-2	706003X	706007X	706010X	28179-7X	28179-8X

Continued on next page

NOTE: All Ring & Pinion Kits with base number 706930 are reverse spiral bevel
 (7) See Ring Gear & Pinion Kits in XGI Catalog for ratio & tooth combinations.
 (8) See Differential Case Assy Kits in XGI Catalog for spline data & ratios.

Jeep Model 30 /181 Front Bill of Material Table

Axle			Axle Kits				Shaft & Joint Assy.	
Bill of Material	Diff. Type	Ratio	Ring Gear & Pinion Kit ⁽⁷⁾	Differential			Right Hand Shaft Assy.	Left Hand Shaft Assy.
				Case Assy. Kit ⁽⁸⁾	Case Kit	Inner Parts Kit		
1986 CJ7, LH Steering - External Type Wheel End (Continued)								
610244-18	Standard	3.54	706503-2X	706003X	706007X	706010X	28179-7X	28179-8X
610244-19	Standard	4.10	706503-4X	706004X	706008X	706010X	28179-7X	28179-8X
610244-20	Standard	4.10	706503-4X	706004X	706008X	706010X	28179-7X	28179-8X
610244-21	Standard	4.56	706503-5X	706004X	706008X	706010X	28179-7X	28179-8X
1986 YJ Non-Disconnect - Live Spindle Wheel End								
610269-1	Standard	3.07	706930-2X	706819X	706007X	706820X	75814-2X	75814-1X
610269-2	Standard	4.10	706930-4X	706932X	706008X	706820X	75814-2X	75814-1X
1986-89 XJ 4X2 (Dead Front)								
610256	-	-	-	-	-	-	-	-
1987-88 YJ Non-Disconnect - Live Spindle Wheel End								
610282-1	Standard	3.07	706930-2X	706819X	706007X	706820X	75814-2X	75814-1X
610282-2	Standard	4.10	706930-4X	706932X	706008X	706820X	75814-2X	75814-1X
610282-3	Standard	3.54	706930-8X	706819X	706007X	706820X	75814-2X	75814-1X
610282-4	Standard	3.55	706930-8X	706819X	706007X	706820X	75814-2X	75814-1X
1987 1/2-88 XJ Non-Disconnect - Live Spindle Wheel End								
610280-1	Standard	3.54	706930-8X	706931X	706933X	706935X	75814-2X	75814-1X
610280-2	Standard	3.73	706930-5X	706932X	706934X	706935X	75814-2X	75814-1X
610280-3	Standard	4.10	706930-4X	706932X	706934X	706935X	75814-2X	75814-1X
610280-4	Standard	4.56	706930-6X	706932X	706934X	706935X	75814-2X	75814-1X
610280-5	Standard	3.07	706930-2X	706931X	706933X	706935X	75814-2X	75814-1X
610280-6	Standard	3.31	706930-3X	706931X	706933X	706935X	75814-2X	75814-1X
610280-7	Standard	3.55	706930-8X	706931X	706933X	706935X	75814-2X	75814-1X
1987 1/2-88 XJ Non-Disconnect, ABS, Anti Skid - Live Spindle Wheel End								
610294-7	Standard	3.55	706930-8X	706931X	706933X	706935X	74286-2X	74286-1X
1988 XJ Non-Disconnect, Valeo Export - Live Spindle Wheel End								
610334-1	Standard	3.55	706930-8X	706931X	706933X	706935X	75814-2X	75814-1X
1988 1/2-89 XJ Non-Disconnect - Live Spindle Wheel End								
610322-3	Standard	4.10	706930-4X	706932X	706934X	706935X	75814-2X	75814-1X
610322-7	Standard	3.55	706930-8X	706931X	706933X	706935X	75814-2X	75814-1X
1988 1/2-89 YJ Non-Disconnect - Live Spindle Wheel End								
610324-1	Standard	3.07	706930-2X	706819X	706007X	706820X	75814-2X	75814-1X
610324-2	Standard	4.10	706930-4X	706932X	706008X	706820X	75814-2X	75814-1X
610324-4	Standard	3.55	706930-8X	706819X	706007X	706820X	75814-2X	75814-1X
1988 1/2-89 XJ Non-Disconnect, ABS, Anti Skid - Live Spindle Wheel End								
610327-7	Standard	3.55	706930-8X	706931X	706933X	706935X	74286-2X	74286-1X
1988 1/2-89 XJ Non-Disconnect, Valeo Export - Live Spindle Wheel End								
610337-1	Standard	3.55	706930-8X	706931X	706933X	706935X	75814-2X	75814-1X
1990-90 1/2 XJ Non-Disconnect, Valeo Export - Live Spindle Wheel End								
610340-1	Standard	3.55	706930-8X	707158X	706933X	707160X	75814-2X	75814-1X
1990-91 1/2 XJ Non-Disconnect - Live Spindle Wheel End								
610318-3	Standard	4.10	706930-4X	707159X	706934X	707160X	73619-4X	73619-3X
610318-5	Standard	3.07	706930-2X	707158X	706933X	707160X	73619-4X	73619-3X
610318-7	Standard	3.55	706930-8X	707158X	706933X	707160X	73619-4X	73619-3X
1990-91 1/2 XJ Non-Disconnect, ABS - Live Spindle Wheel End								
610336-7	Standard	3.55	706930-8X	707158X	706933X	707160X	74286-2X	74286-1X

NOTE: All Ring & Pinion Kits with base number 706930 are reverse spiral bevel
 (7) See Ring Gear & Pinion Kits in XGI Catalog for ratio & tooth combinations.
 (8) See Differential Case Assy Kits in XGI Catalog for spline data & ratios.

Jeep Model 30 /181 Front Bill of Material Table

Axle			Axle Kits				Shaft & Joint Assy.	
Bill of Material	Diff. Type	Ratio	Ring Gear & Pinion Kit ⁽⁷⁾	Differential			Right Hand Shaft Assy.	Left Hand Shaft Assy.
				Case Assy. Kit ⁽⁸⁾	Case Kit	Inner Parts Kit		
1990-91 1/2 YJ Non-Disconnect - Live Spindle Wheel End								
610320-1	Standard	3.07	706930-2X	707158X	706007X	707160X	75814-2X	75814-1X
610320-2	Standard	4.10	706930-4X	706932X	706008X	706820X	75814-2X	75814-1X
610320-4	Standard	3.55	706930-8X	707158X	706007X	707160X	75814-2X	75814-1X
610320-5	Standard	3.07	706930-2X	707158X	706007X	706160X	75814-2X	75814-1X
610320-6	Standard	4.10	706930-4X	706932X	706008X	706820X	75814-2X	75814-1X
610320-7	Standard	3.55	706930-8X	707158X	706007X	707160X	75814-2X	75814-1X
1990 1/2-91 1/2 XJ 4X2 (Dead Front)								
610351	-	-	-	-	-	-	-	-
1991 XJ Non-Disconnect								
610373-1	Standard	3.73	706930-8X	707158X	706933X	707160X	75814-2X	75814-1X
1991 XJ 4X2 (Dead Front)								
610375	-	-	-	-	-	-	-	-
1991 1/2 XJ Non-Disconnect								
610402-3	Standard	4.10	706930-4X	707159X	706934X	707160X	75814-2X	75814-1X
610402-5	Standard	3.07	706930-2X	707158X	706933X	707160X	75814-2X	75814-1X
610402-7	Standard	3.55	706930-8X	707158X	706933X	707160X	75814-2X	75814-1X
1991 1/2 XJ Non-Disconnect, ABS								
610403-7	Standard	3.55	706930-8X	707158X	706933X	707160X	74286-2X	74286-1X
1991 1/2-92 1/2 XJ 4X2 (Dead Front)								
610404	-	-	-	-	-	-	-	-
1992-93 1/2 XJ 4X2 (Dead Front), ABS								
610348	-	-	-	-	-	-	-	-
1992-93 1/2 XJ Non-Disconnect, ABS								
610379-5	Standard	3.07	706930-2X	707158X	706933X	707160X	75815-2X	75815-1X
610379-7	Standard	3.55	706930-8X	707158X	706933X	707160X	75815-2X	75815-1X
1992-93 1/2 XJ Non-Disconnect								
610391-2	Standard	3.73	706930-5X	707159X	706934X	707160X	75814-2X	75814-1X
610391-3	Standard	4.10	706930-4X	707159X	706934X	707160X	75814-2X	75814-1X
610391-5	Standard	3.07	706930-2X	707158X	706933X	707160X	75814-2X	75814-1X
610391-7	Standard	3.55	706930-8X	707158X	706933X	707160X	75814-2X	75814-1X
1992-93 1/2 YJ Non-Disconnect								
610392-1	Standard	3.07	706930-2X	707158X	706007X	707160X	75814-2X	75814-1X
610392-2	Standard	3.55	706930-8X	707158X	706007X	707160X	75814-2X	75814-1X
610392-4	Standard	4.10	706930-4X	707159X	706008X	707160X	75814-2X	75814-1X
1992 1/2-93 1/2 XJ 4X2 (Dead Front)								
610316	-	-	-	-	-	-	-	-
1993-93 1/2 XJ Non-Disconnect - Live Spindle Wheel End								
610383-3	Standard	4.10	706930-4X	707159X	706934X	707160X	75814-2X	75814-1X
610383-7	Standard	3.55	706930-8X	707158X	706933X	707160X	75814-2X	75814-1X
1993-93 1/2 XJ Non-Disconnect, ABS - Live Spindle								
610413-7	Standard	3.55	706930-8X	707158X	706933X	707160X	75815-2X	75815-1X
1993-93 1/2 XJ 4X2 (Dead Front), ABS								
610416	-	-	-	-	-	-	-	-
1993-93 1/2 XJ Non-Disconnect, ABS								
610417-1	Standard	3.55	706930-8X	707158X	706933X	707160X	75815-2X	75815-1X

NOTE: All Ring & Pinion Kits with base number 706930 are reverse spiral bevel
(7) See Ring Gear & Pinion Kits in XGI Catalog for ratio & tooth combinations.
(8) See Differential Case Assy Kits in XGI Catalog for spline data & ratios.

Jeep Model 30 /181 Front Bill of Material Table

Axle			Axle Kits				Shaft & Joint Assy.	
Bill of Material	Diff. Type	Ratio	Ring Gear & Pinion Kit ⁽⁷⁾	Differential			Right Hand Shaft Assy.	Left Hand Shaft Assy.
				Case Assy. Kit ⁽⁸⁾	Case Kit	Inner Parts Kit		
1994 XJ 4X2 (Dead Front)								
610453	-	-	-	-	-	-	-	-
1994 XJ 4X2 (Dead Front), ABS								
610472	-	-	-	-	-	-	-	-
1994 XJ Non-Disconnect								
610466-2	Standard	3.73	706930-5X	707159X	706934X	707160X	75814-2X	75814-1X
610466-3	Standard	4.10	706930-4X	707159X	706934X	707160X	75814-2X	75814-1X
610466-5	Standard	3.07	706930-2X	707158X	706933X	707160X	75814-2X	75814-1X
610466-7	Standard	3.55	706930-8X	707158X	706933X	707160X	75814-2X	75814-1X
610467-5	Standard	3.07	706930-2X	707158X	706933X	707160X	75815-2X	75815-1X
610467-7	Standard	3.55	706930-8X	707158X	706933X	707160X	75815-2X	75815-1X
1994 XJ Non-Disconnect - Live Spindle Wheel End								
610468-3	Standard	4.10	706930-4X	707159X	706008X	707160X	75814-2X	75814-1X
610468-7	Standard	3.55	706930-8X	707158X	706007X	707160X	75814-2X	75814-1X
1994 XJ Non-Disconnect, ABS - Live Spindle Wheel End								
610469-7	Standard	3.55	706930-8X	707158X	706007X	707160X	75815-2X	75815-1X
1994 YJ Disconnect (Dead Front)								
610464	-	-	-	-	-	-	-	-
1994-96 YJ Non-Disconnect								
610463-2	Standard	3.55	706930-8X	707158X	706007X	707160X	75814-2X	75814-1X
610463-4	Standard	4.10	706930-4X	707159X	706008X	707160X	75814-2X	75814-1X
1994 1/2-96 XJ 4X2 (Dead Front)								
610500	-	-	-	-	-	-	-	-
1994 1/2-97 XJ 4X2 (Dead Front), ABS								
610501	-	-	-	-	-	-	-	-
1994 1/2-97 XJ Non-Disconnect								
610502-2	Standard	3.73	706930-5X	707159X	706934X	707160X	75814-2X	75814-1X
610502-3	Standard	4.10	706930-4X	707159X	706934X	707160X	75814-2X	75814-1X
610502-5	Standard	3.07	706930-2X	707158X	706933X	707160X	75814-2X	75814-1X
610502-7	Standard	3.55	706930-8X	707158X	706933X	707160X	75814-2X	75814-1X
1994 1/2-97 XJ Non-Disconnect, ABS								
610503-5	Standard	3.07	706930-2X	707158X	706933X	707160X	75815-2X	75815-1X
610503-7	Standard	3.55	706930-8X	707158X	706933X	707160X	75815-2X	75815-1X
1994 1/2-97 XJ RHD								
610504-3	Standard	4.10	706930-4X	707159X	706008X	707160X	75814-2X	75814-1X
610504-7	Standard	3.55	706930-8X	707158X	706007X	707160X	75814-2X	75814-1X
1994 1/2-97 XJ RHD, ABS								
610505-7	Standard	3.55	706930-8X	707158X	706007X	707160X	75815-2X	75815-1X
1994 1/2-97 XJ RHD, (Dead Front)								
610506	-	-	-	-	-	-	-	-
610507	-	-	-	-	-	-	-	-
1995-97 XJ Non-Disconnect, Cardan - Live Spindle Wheel End								
610367-2	Standard	3.73	706930-5X	707159X	706934X	707160X	75814-2X	75814-1X
1995-97 XJ Non-Disconnect, ABS								
610528-2	Standard	3.73	706930-5X	707159X	706934X	707160X	75815-2X	75815-1X
610558-2	Standard	3.73	706930-5X	707159X	706934X	707160X	75815-2X	75815-1X

NOTE: All Ring & Pinion Kits with base number 706930 are reverse spiral bevel
 (7) See Ring Gear & Pinion Kits in XGI Catalog for ratio & tooth combinations.
 (8) See Differential Case Assy Kits in XGI Catalog for spline data & ratios.

Jeep Model 30 /181 Front Bill of Material Table

Axle			Axle Kits				Shaft & Joint Assy.	
Bill of Material	Diff. Type	Ratio	Ring Gear & Pinion Kit ⁽⁷⁾	Differential			Right Hand Shaft Assy.	Left Hand Shaft Assy.
				Case Assy. Kit ⁽⁸⁾	Case Kit	Inner Parts Kit		
1995 1/2-97 XJ RHD								
610557-2	Standard	3.73	706930-5X	707159X	706008X	707160X	75814-2X	75814-1X
1997 XJ Non-Disconnect - Live Spindle Wheel End								
610671-2	Standard	3.73	706930-5X	707159X	706008X	707160X	75814-2X	75814-1X
610671-3	Standard	4.10	706930-4X	707159X	706008X	707160X	75814-2X	75814-1X
610671-5	Standard	3.07	706930-2X	707158X	706007X	707160X	75814-2X	75814-1X
610671-7	Standard	3.55	706930-8X	707158X	706007X	707160X	75814-2X	75814-1X
1997 1/2 XJ 4X2 (Dead Front)								
610667	-	-	-	-	-	-	-	-
610669	-	-	-	-	-	-	-	-
1997 1/2 XJ 4X2 (Dead Front), ABS								
610668	-	-	-	-	-	-	-	-
610670	-	-	-	-	-	-	-	-
1997 1/2 XJ Non-Disconnect, ABS - Live Spindle Wheel End								
610672-5	Standard	3.07	706930-2X	707158X	706007X	707160X	75815-2X	75815-1X
610672-7	Standard	3.55	706930-8X	707158X	706007X	707160X	75815-2X	75815-1X
610674-7	Standard	3.55	706930-8X	707158X	706007X	707160X	75815-2X	75815-1X
1997 1/2 XJ Non-Disconnect - Live Spindle Wheel End								
610673-3	Standard	4.10	706930-4X	707159X	706008X	707160X	75814-2X	75814-1X
610673-7	Standard	3.55	706930-8X	707158X	706007X	707160X	75814-2X	75814-1X
1997 1/2 XJ Diesel								
610675-2	Standard	3.73	706930-5X	707159X	706008X	707160X	75814-2X	75814-1X
610677-2	Standard	3.73	706930-5X	707159X	706008X	707160X	75814-2X	75814-1X
1997 1/2 XJ Diesel, ABS								
610676-2	Standard	3.73	706930-5X	707159X	706008X	707160X	75815-2X	75815-1X
610678-2	Standard	3.73	706930-5X	707159X	706008X	707160X	75815-2X	75815-1X
1998 XJ Export Non-Disconnect								
610849-1	Standard	3.07	706930-2X	707158X	706933X	707160X	75814-2X	75814-1X
610849-2	Standard	3.55	706930-8X	707158X	706933X	707160X	75814-2X	75814-1X
610849-3	Standard	4.10	706930-4X	707159X	706934X	707160X	75814-2X	75814-1X
1998 XJ Export Non-Disconnect, ABS								
610850-1	Standard	3.07	706930-2X	707158X	706933X	707160X	75815-2X	75815-1X
610850-2	Standard	3.55	706930-8X	707158X	706933X	707160X	75815-2X	75815-1X
1998 XJ Export Non-Disconnect, RH Steering								
610851-1	Standard	3.55	706930-8X	707158X	706933X	707160X	75814-2X	75814-1X
610851-2	Standard	4.10	706930-4X	707159X	706934X	707160X	75814-2X	75814-1X
1998 XJ Export Non-Disconnect, RH Steering, ABS								
610852-1	Standard	3.55	706930-8X	707158X	706933X	707160X	75815-2X	75815-1X
1998 XJ Export Non-Disconnect, Diesel, ABS								
610853-1	Standard	3.73	706930-5X	707159X	706934X	707160X	75815-2X	75815-1X
1998 XJ Export (Dead Front)								
610854	-	-	-	-	-	-	-	-
1998 XJ Export (Dead Front) ABS								
610855	-	-	-	-	-	-	-	-

NOTE: All Ring & Pinion Kits with base number 706930 are reverse spiral bevel
 (7) See Ring Gear & Pinion Kits in XGI Catalog for ratio & tooth combinations.
 (8) See Differential Case Assy Kits in XGI Catalog for spline data & ratios.

Jeep Model 30 /181 Front Bill of Material Table

Axle			Axle Kits				Shaft & Joint Assy.	
Bill of Material	Diff. Type	Ratio	Ring Gear & Pinion Kit ⁽⁷⁾	Differential			Right Hand Shaft Assy.	Left Hand Shaft Assy.
				Case Assy. Kit ⁽⁸⁾	Case Kit	Inner Parts Kit		
1998-98 1/2 XJ Non-Disconnect, Cardan - Live Spindle Wheel End								
610758-1	Standard	3.07	706930-2X	707158X	706007X	707160X	75814-2X	75814-1X
610758-2	Standard	3.55	706930-8X	707158X	706007X	707160X	75814-2X	75814-1X
610758-3	Standard	4.10	706930-4X	707159X	706008X	707160X	75814-2X	75814-1X
1998-98 1/2 XJ Non-Disconnect, ABS - Live Spindle								
610759-1	Standard	3.07	706930-2X	707158X	706007X	707160X	75815-2X	75815-1X
610759-2	Standard	3.55	706930-8X	707158X	706007X	707160X	75815-2X	75815-1X
610761-1	Standard	3.55	706930-8X	707158X	706007X	707160X	75815-2X	75815-1X
1998-98 1/2 XJ Non-Disconnect - Live Spindle Wheel End								
610760-1	Standard	3.55	706930-8X	707158X	706007X	707160X	75814-2X	75814-1X
610760-2	Standard	4.10	706930-4X	707159X	706008X	707160X	75814-2X	75814-1X
1998-98 1/2 XJ Diesel								
610762-1	Standard	3.73	706930-5X	707159X	706008X	707160X	75814-2X	75814-1X
610764-1	Standard	3.73	706930-5X	707159X	706008X	707160X	75814-2X	75814-1X
1998-98 1/2 XJ Diesel, ABS								
610763-1	Standard	3.73	706930-5X	707159X	706008X	707160X	75815-2X	75815-1X
610765-1	Standard	3.73	706930-5X	707159X	706008X	707160X	75815-2X	75815-1X
1998-98 1/2 XJ 4X2 (Dead Front)								
610766	-	-	-	-	-	-	-	-
610768	-	-	-	-	-	-	-	-
1998-98 1/2 XJ 4X2 (Dead Front), ABS								
610767	-	-	-	-	-	-	-	-
610769	-	-	-	-	-	-	-	-

NOTE: All Ring & Pinion Kits with base number 706930 are reverse spiral bevel
 (7) See Ring Gear & Pinion Kits in XGI Catalog for ratio & tooth combinations.
 (8) See Differential Case Assy Kits in XGI Catalog for spline data & ratios.

Jeep Model 30 /181 Front Variable Parts Listing

Kits & Parts - Use With All Applications							
Description & Item Number (Refer to "Exploded View" at the front of this section)			Bills of Material				
			603732	610053 610086 610136 610154 610156 610164	610183	610206 610221	610222
1	Seal – Pinion Oil	10	39118	39118	39118	39118	39118
2	End Yoke or Assembly (inc 12)	11	2-4-8091-1X	2-4-8091-1X	2-4-6771-1X	2-4-8091-1X	2-4-6771-1X
3	Slinger – End Yoke	12	41498	41498	41498	41498	41498
4	KIT – Carrier Cover	-	706348X	706348X	706943X	706943X	706943X
5	Carrier Cover	15	36538	36538	40869	40869	40869
6	Gasket/RTV Silicone Sealant	16	34684	34684	38615	38615	38615
7	Plug – Carrier Cover	17	36472	36472	36924	36924	36924
8	Gear – Differential (std)	26	33213	33213	620486	620486	620486
9	Thrustwasher – Differential Gear (std)	28	34095	34095	40027	40027	40027
10	KIT – Right Knuckle Assembly	-	706535X	700074	—	—	—
11	KIT – Left Knuckle Assembly	-	706536X	700075	—	—	—
12	KIT – Socket Assembly	-	706116X	706116X	706944X	706944X	706944X
13	Nut – Slotted	32	35416	35416	43682	43682	44101
14	Adjusting Split Ring	34	35417	35417	40586	40586	40586
15	Socket Assembly	35	40112	40112	40583	40583	40583
16	Nut – Hex Jam / Slotted	36	35566	35566	40584	40584	40584
17	Socket Assembly	37	40113	40113	40916	40916	40916
18	Snap Ring	38	35928	35928	—	—	—
19	Bolt – Knuckle	39	36326-3	36326-1	41027	41027	41027
20	Right Knuckle	40	37639	41535	40707	40707	40707
21	Left Knuckle	41	37640	41536	40579	40579	40579
22	Slinger – Spindle Yoke (Inner)	46	35168	35168	46849	46849	46849
23	Slinger – Spindle Yoke (Outer)	47	36364	36364	40589	40589	40589
24	KIT – Spindle Seal & Bearing	-	706527X	706527X	—	—	—
25	KIT – Spindle	-	706537X	706537X	—	—	—
26	Oil Seal	48	36361	36361	—	—	—
27	Oil Seal (block vee)	49	38128	38128	—	—	—
28	Spacer – Wheel Bearing Spindle	50	38106	38106	—	—	—
29	Needle Bearing Assembly	51	550759	550759	—	—	—
30	Spindle – Wheel Bearing	52	38148	38148	—	—	—
31	KIT – Inner Wheel Bearing	55	706578X	706578X	—	—	—
32	KIT – Outer Wheel Bearing	57	706111X	706111X	—	—	—
33	Lockwasher – Wheel Bearing	58	17015	17015	—	—	—
34	Nut – Wheel Bearing	59	17016	17016	—	—	—
35	Lockwasher – Wheel Bearing Nut	60	17017	17017	—	—	—
36	Gasket – Drive Flange	61	18188	18188	—	—	—
37	Flange – Axle Drive	62	36436	36436	—	—	—
38	Snap Ring	63	18270	18270	—	—	—
39	Hub Cap	64	32001	32001	—	—	—
40	Lockwasher	66	501209-3	501209-3	—	—	—
41	Hub Assembly	67	—	—	40592	40592	40592
42	Tone Ring (ABS)/Slinger	72	—	—	—	—	—
43	Spring – Wave Washer	73	—	—	—	—	—

(See next page for additional bills of material)

Jeep Model 30 /181 Front Variable Parts Listing

Kits & Parts - Use With All Applications							
Description & Item Number (Refer to "Exploded View" at the front of this section)			Bills of Material				
			610234 610237	610244	610256	610269	610280
1	Seal – Pinion Oil	10	39118	39118	39118	39118	39118
2	End Yoke or Assembly (inc 12)	11	—	2-4-8091-1X	—	2-4-8091-1X	2-4-6561-1
3	Slinger – End Yoke	12	—	41498	—	41498	—
4	KIT – Carrier Cover	-	—	707049X	—	706943X	706943X
5	Carrier Cover	15	—	36538	—	40869	40869
6	Gasket/RTV Silicone Sealant	16	—	38615	—	38615	39615
7	Plug – Carrier Cover	17	—	36918	—	36924	36924
8	Gear – Differential (std)	26	—	33213	—	620486	620486
9	Thrustwasher – Diff Gear (std)	28	—	34095	—	40027	40027
10	KIT – Right Knuckle Assembly	-	—	700074	—	—	—
11	KIT – Left Knuckle Assembly	-	—	700075	—	—	—
12	KIT – Socket Assembly	-	706944X	706116X	706944X	706944X	706944X
13	Nut – Slotted	32	43682	35416	43682	43682	43682
14	Adjusting Split Ring	34	40586	35417	40586	40586	40586
15	Socket Assembly	35	40583	40112	40583	40583	40583
16	Nut – Hex Jam / Slotted	36	40584	35566	40584	40584	40584
17	Socket Assembly	37	40916	40113	40916	40916	40916
18	Snap Ring	38	—	35928	—	—	—
19	Bolt – Knuckle	39	41027	36326-1	—	41027	41027
20	Right Knuckle	40	40707	41535	—	40707	40707
21	Left Knuckle	41	40579	41536	—	40579	40579
22	Slinger – Spindle Yoke (Inner)	46	—	35168	—	46849	46849
23	Slinger – Spindle Yoke (Outer)	47	—	36364	—	40589	40589
24	KIT – Spindle Seal & Bearing	-	—	706527X	—	—	—
25	KIT – Spindle	-	—	706537X	—	—	—
26	Oil Seal	48	—	36361	—	—	—
27	Oil Seal (block vee)	49	—	38128	—	—	—
28	Spacer – Wheel Bearing Spindle	50	—	38106	—	—	—
29	Needle Bearing Assembly	51	—	550759	—	—	—
30	Spindle – Wheel Bearing	52	—	38148	—	—	—
31	KIT – Inner Wheel Bearing	55	—	706578X	—	—	—
32	KIT – Outer Wheel Bearing	57	—	706111X	—	—	—
33	Lockwasher – Wheel Bearing	58	—	17015	—	—	—
34	Nut – Wheel Bearing	59	—	17016	—	—	—
35	Lockwasher – Wheel Bearing Nut	60	—	17017	—	—	—
36	Gasket – Drive Flange	61	—	18188	—	—	—
37	Flange – Axle Drive	62	—	36436	—	—	—
38	Snap Ring	63	—	18270	—	—	—
39	Hub Cap	64	—	32001	—	—	—
40	Lockwasher	66	—	501209-3	—	—	—
41	Hub Assembly	67	40592	—	—	40592	40592
42	Tone Ring (ABS)/Slinger	72	—	—	—	—	—
43	Spring – Wave Washer	73	—	—	—	—	—

(See next page for additional bills of material)

Jeep Model 30 /181 Front Variable Parts Listing

Kits & Parts - Use With All Applications							
	Description & Item Number (Refer to "Exploded View" at the front of this section)		Bills of Material				
			610282	610294	610316	610318 610320	610322 610324
1	Seal – Pinion Oil	10	39118	39118	39118	39118	39118
2	End Yoke or Assembly (inc 12)	11	2-4-8091-1X	2-4-6561-1	—	2-4-6561-1	2-4-6561-1
3	Slinger – End Yoke	12	41498	—	—	—	—
4	KIT – Carrier Cover	-	706943X	706943X	—	707180X	707180X
5	Carrier Cover	15	40869	40869	—	40869	40869
6	Gasket/RTV Silicone Sealant	16	38615	38615	—	38615	38615
7	Plug – Carrier Cover	17	36924	36924	—	43180	43180
8	Gear – Differential (std)	26	620486	620486	—	33213	620486
9	Thrustwasher – Diff Gear (std)	28	40027	40027	—	40027	40027
10	KIT – Right Knuckle Assembly	-	—	—	74507X	74231X	—
11	KIT – Left Knuckle Assembly	-	—	—	74508X	74232X	—
12	KIT – Socket Assembly	-	706944X	706944X	706944X	706944X	706944X
13	Nut – Slotted	32	43682	43682	43682	43682	43682
14	Adjusting Split Ring	34	40586	40586	40586	40586	40586
15	Socket Assembly	35	40583	40583	40583	40583	40583
16	Nut – Hex Jam / Slotted	36	40584	40584	40584	40584	40584
17	Socket Assembly	37	40916	40916	40916	40916	40916
18	Snap Ring	38	—	—	—	—	—
19	Bolt – Knuckle	39	41027	41027	41027	41027	41027
20	Right Knuckle	40	40707	42800	44322	43351	40707
21	Left Knuckle	41	40579	42801	44323	43352	40579
22	Slinger – Spindle Yoke (Inner)	46	46849	701113X	—	46849	46849
23	Slinger – Spindle Yoke (Outer)	47	40589	—	40589	40589	40589
24	KIT – Spindle Seal & Bearing	-	—	—	—	—	—
25	KIT – Spindle	-	—	—	—	—	—
26	Oil Seal	48	—	—	—	—	—
27	Oil Seal (block vee)	49	—	—	—	—	—
28	Spacer – Wheel Bearing Spindle	50	—	—	—	—	—
29	Needle Bearing Assembly	51	—	—	—	—	—
30	Spindle – Wheel Bearing	52	—	—	—	—	—
31	KIT – Inner Wheel Bearing	55	—	—	—	—	—
32	KIT – Outer Wheel Bearing	57	—	—	—	—	—
33	Lockwasher – Wheel Bearing	58	—	—	—	—	—
34	Nut – Wheel Bearing	59	—	—	—	—	—
35	Lockwasher – Wheel Bearing Nut	60	—	—	—	—	—
36	Gasket – Drive Flange	61	—	—	—	—	—
37	Flange – Axle Drive	62	—	—	—	—	—
38	Snap Ring	63	—	—	—	—	—
39	Hub Cap	64	—	—	—	—	—
40	Lockwasher	66	—	—	—	—	—
41	Hub Assembly	67	40592	40592	43355	43355	40592
42	Tone Ring (ABS)/Slinger	72	—	42805	—	—	—
43	Spring – Wave Washer	73	—	—	45749	—	—

(See next page for additional bills of material)

Jeep Model 30 /181 Front Variable Parts Listing

Kits & Parts - Use With All Applications							
Description & Item Number (Refer to "Exploded View" at the front of this section)			Bills of Material				
			610327	610334	610336	610337	610340
1	Seal – Pinion Oil	10	39118	39118	39118	39118	39118
2	End Yoke or Assembly (inc 12)	11	2-4-6561-1	2-4-6561-1	2-4-6561-1	2-4-6561-1	2-4-6561-1
3	Slinger – End Yoke	12	—	—	—	—	—
4	KIT – Carrier Cover	-	707180X	706943X	707180X	707180X	707180X
5	Carrier Cover	15	40869	40869	40869	40869	40869
6	Gasket/RTV Silicone Sealant	16	38615	38615	38615	38615	38615
7	Plug – Carrier Cover	17	43180	43180	43180	43180	43180
8	Gear – Differential (std)	26	620486	620486	33213	620486	33213
9	Thrustwasher – Diff Gear (std)	28	40027	40027	40027	40027	40027
10	KIT – Right Knuckle Assembly	-	—	—	74233X	—	—
11	KIT – Left Knuckle Assembly	-	—	—	74234X	—	—
12	KIT – Socket Assembly	-	706944X	706944X	706944X	706944X	706944X
13	Nut – Slotted	32	43682	43682	43682	43682	43682
14	Adjusting Split Ring	34	40586	40586	40586	40586	40586
15	Socket Assembly	35	40583	40583	40583	40583	40583
16	Nut – Hex Jam / Slotted	36	40584	40584	40584	40584	40584
17	Socket Assembly	37	40916	40916	40916	40916	40916
18	Snap Ring	38	—	—	—	—	—
19	Bolt – Knuckle	39	41027	41027	41027	41027	41027
20	Right Knuckle	40	42800	40707	43391	40707	43351
21	Left Knuckle	41	42801	40579	43392	40579	43352
22	Slinger – Spindle Yoke (Inner)	46	701113X	46849	701113X	46849	46849
23	Slinger – Spindle Yoke (Outer)	47	—	40589	—	40589	40589
24	KIT – Spindle Seal & Bearing	-	—	—	—	—	—
25	KIT – Spindle	-	—	—	—	—	—
26	Oil Seal	48	—	—	—	—	—
27	Oil Seal (block vee)	49	—	—	—	—	—
28	Spacer – Wheel Bearing Spindle	50	—	—	—	—	—
29	Needle Bearing Assembly	51	—	—	—	—	—
30	Spindle – Wheel Bearing	52	—	—	—	—	—
31	KIT – Inner Wheel Bearing	55	—	—	—	—	—
32	KIT – Outer Wheel Bearing	57	—	—	—	—	—
33	Lockwasher – Wheel Bearing	58	—	—	—	—	—
34	Nut – Wheel Bearing	59	—	—	—	—	—
35	Lockwasher – Wheel Bearing Nut	60	—	—	—	—	—
36	Gasket – Drive Flange	61	—	—	—	—	—
37	Flange – Axle Drive	62	—	—	—	—	—
38	Snap Ring	63	—	—	—	—	—
39	Hub Cap	64	—	—	—	—	—
40	Lockwasher	66	—	—	—	—	—
41	Hub Assembly	67	40592	40592	43355	40592	43355
42	Tone Ring (ABS)/Slinger	72	42805	—	42805	—	—
43	Spring – Wave Washer	73	—	—	—	—	—

(See next page for additional bills of material)

Jeep Model 30 /181 Front Variable Parts Listing

Kits & Parts - Use With All Applications							
Description & Item Number (Refer to "Exploded View" at the front of this section)			Bills of Material				
			610348	610351	610367	610373	610375
1	Seal – Pinion Oil	10	39118	39118	39118	39118	39118
2	End Yoke or Assembly (inc 12)	11	—	—	2-4-6561-1	2-4-6561-1	—
3	Slinger – End Yoke	12	—	—	—	—	—
4	KIT – Carrier Cover	-	—	—	707180X	707180X	—
5	Carrier Cover	15	—	—	40869	40869	—
6	Gasket/RTV Silicone Sealant	16	—	—	38615	38615	—
7	Plug – Carrier Cover	17	—	—	43180	43180	—
8	Gear – Differential (std)	26	—	—	33213	33213	—
9	Thrustwasher – Diff Gear (std)	28	—	—	40027	40027	—
10	KIT – Right Knuckle Assembly	-	—	—	74507X	74231X	—
11	KIT – Left Knuckle Assembly	-	—	—	74508X	74232X	—
12	KIT – Socket Assembly	-	706944X	706944X	706944X	706944X	706944X
13	Nut – Slotted	32	43682	43682	43682	43682	43682
14	Adjusting Split Ring	34	40586	40586	40586	40586	40586
15	Socket Assembly	35	40583	40583	40583	40583	40583
16	Nut – Hex Jam / Slotted	36	40584	40584	40584	40584	40584
17	Socket Assembly	37	40916	40916	40916	40916	40916
18	Snap Ring	38	—	—	—	—	—
19	Bolt – Knuckle	39	41027	—	41027	41027	—
20	Right Knuckle	40	44181	—	44322	43351	—
21	Left Knuckle	41	44182	—	44323	43352	—
22	Slinger – Spindle Yoke (Inner)	46	—	—	46849	46849	—
23	Slinger – Spindle Yoke (Outer)	47	—	—	40589	40589	—
24	KIT – Spindle Seal & Bearing	-	—	—	—	—	—
25	KIT – Spindle	-	—	—	—	—	—
26	Oil Seal	48	—	—	—	—	—
27	Oil Seal (block vee)	49	—	—	—	—	—
28	Spacer – Wheel Bearing Spindle	50	—	—	—	—	—
29	Needle Bearing Assembly	51	—	—	—	—	—
30	Spindle – Wheel Bearing	52	—	—	—	—	—
31	KIT – Inner Wheel Bearing	55	—	—	—	—	—
32	KIT – Outer Wheel Bearing	57	—	—	—	—	—
33	Lockwasher – Wheel Bearing	58	—	—	—	—	—
34	Nut – Wheel Bearing	59	—	—	—	—	—
35	Lockwasher – Wheel Bearing Nut	60	—	—	—	—	—
36	Gasket – Drive Flange	61	—	—	—	—	—
37	Flange – Axle Drive	62	—	—	—	—	—
38	Snap Ring	63	—	—	—	—	—
39	Hub Cap	64	—	—	—	—	—
40	Lockwasher	66	—	—	—	—	—
41	Hub Assembly	67	43355	—	43355	43355	—
42	Tone Ring (ABS)/Slinger	72	44646	—	—	—	—
43	Spring – Wave Washer	73	45749	—	45749	—	45749

(See next page for additional bills of material)

Jeep Model 30 /181 Front Variable Parts Listing

Kits & Parts - Use With All Applications							
Description & Item Number (Refer to "Exploded View" at the front of this section)			Bills of Material				
			610379	610383	610391	610392	610402
1	Seal – Pinion Oil	10	39118	44895	39118	39118	39118
2	End Yoke or Assembly (inc 12)	11	2-4-6561-1	2-4-6561-1	2-4-6561-1	2-4-6561-1	2-4-6561-1
3	Slinger – End Yoke	12	—	—	—	—	—
4	KIT – Carrier Cover	-	707180X	707180X	707180X	707180X	707180X
5	Carrier Cover	15	40869	40869	40869	40869	40869
6	Gasket/RTV Silicone Sealant	16	38615	38615	38615	38615	38615
7	Plug – Carrier Cover	17	43180	43180	43180	43180	43180
8	Gear – Differential (std)	26	33213	33213	33213	33213	33213
9	Thrustwasher – Diff Gear (std)	28	40027	40027	40027	40027	40027
10	KIT – Right Knuckle Assembly	-	74386X	74507X	74507X	74507X	74507X
11	KIT – Left Knuckle Assembly	-	74387X	74508X	74508X	74508X	74508X
12	KIT – Socket Assembly	-	706944X	706944X	706944X	706944X	706944X
13	Nut – Slotted	32	43682	43682	43682	43682	43682
14	Adjusting Split Ring	34	40586	40586	40586	40586	40586
15	Socket Assembly	35	40583	40583	40583	40583	40583
16	Nut – Hex Jam / Slotted	36	40584	40584	40584	40584	40584
17	Socket Assembly	37	40916	40916	40916	40916	40916
18	Snap Ring	38	—	—	—	—	—
19	Bolt – Knuckle	39	41027	41027	41027	41027	41027
20	Right Knuckle	40	44181	44322	44322	44322	44322
21	Left Knuckle	41	44182	44323	44323	44323	44323
22	Slinger – Spindle Yoke (Inner)	46	46849	46849	46849	46849	46849
23	Slinger – Spindle Yoke (Outer)	47	—	46988	40589	40589	40589
24	KIT – Spindle Seal & Bearing	-	—	—	—	—	—
25	KIT – Spindle	-	—	—	—	—	—
26	Oil Seal	48	—	—	—	—	—
27	Oil Seal (block vee)	49	—	—	—	—	—
28	Spacer – Wheel Bearing Spindle	50	—	—	—	—	—
29	Needle Bearing Assembly	51	—	—	—	—	—
30	Spindle – Wheel Bearing	52	—	—	—	—	—
31	KIT – Inner Wheel Bearing	55	—	—	—	—	—
32	KIT – Outer Wheel Bearing	57	—	—	—	—	—
33	Lockwasher – Wheel Bearing	58	—	—	—	—	—
34	Nut – Wheel Bearing	59	—	—	—	—	—
35	Lockwasher – Wheel Bearing Nut	60	—	—	—	—	—
36	Gasket – Drive Flange	61	—	—	—	—	—
37	Flange – Axle Drive	62	—	—	—	—	—
38	Snap Ring	63	—	—	—	—	—
39	Hub Cap	64	—	—	—	—	—
40	Lockwasher	66	—	—	—	—	—
41	Hub Assembly	67	43355	43355	43355	43355	43355
42	Tone Ring (ABS)/Slinger	72	44646	—	—	—	—
43	Spring – Wave Washer	73	—	45749	—	45749	—

(See next page for additional bills of material)

Jeep Model 30 /181 Front Variable Parts Listing

Kits & Parts - Use With All Applications							
Description & Item Number (Refer to "Exploded View" at the front of this section)			Bills of Material				
			610403	610404	610413	610416	610417
1	Seal – Pinion Oil	10	39118	39118	44895	39118	39118
2	End Yoke or Assembly (inc 12)	11	2-4-6561-1	—	2-4-6561-1	—	2-4-6561-1
3	Slinger – End Yoke	12	—	—	—	—	—
4	KIT – Carrier Cover	-	707180X	—	707180X	—	707180X
5	Carrier Cover	15	40869	—	40869	—	40869
6	Gasket/RTV Silicone Sealant	16	38615	—	38615	—	38615
7	Plug – Carrier Cover	17	43180	—	43180	—	43180
8	Gear – Differential (std)	26	33213	—	33213	—	33213
9	Thrustwasher – Diff Gear (std)	28	40027	—	40027	—	40027
10	KIT – Right Knuckle Assembly	-	74233X	—	74386X	74386X	74386X
11	KIT – Left Knuckle Assembly	-	74234X	—	74387X	74387X	74387X
12	KIT – Socket Assembly	-	706944X	706944X	706944X	706944X	706944X
13	Nut – Slotted	32	43682	43682	43682	43682	43682
14	Adjusting Split Ring	34	40586	40586	40586	40586	40586
15	Socket Assembly	35	40583	40583	40583	40583	40583
16	Nut – Hex Jam / Slotted	36	40584	40584	40584	40584	40584
17	Socket Assembly	37	40916	40916	40916	40916	40916
18	Snap Ring	38	—	—	—	—	—
19	Bolt – Knuckle	39	41027	—	41027	41027	41027
20	Right Knuckle	40	43391	—	44181	44181	44181
21	Left Knuckle	41	43392	—	44182	44182	44182
22	Slinger – Spindle Yoke (Inner)	46	701113X	—	46849	—	46849
23	Slinger – Spindle Yoke (Outer)	47	—	—	—	—	—
24	KIT – Spindle Seal & Bearing	-	—	—	—	—	—
25	KIT – Spindle	-	—	—	—	—	—
26	Oil Seal	48	—	—	—	—	—
27	Oil Seal (block vee)	49	—	—	—	—	—
28	Spacer – Wheel Bearing Spindle	50	—	—	—	—	—
29	Needle Bearing Assembly	51	—	—	—	—	—
30	Spindle – Wheel Bearing	52	—	—	—	—	—
31	KIT – Inner Wheel Bearing	55	—	—	—	—	—
32	KIT – Outer Wheel Bearing	57	—	—	—	—	—
33	Lockwasher – Wheel Bearing	58	—	—	—	—	—
34	Nut – Wheel Bearing	59	—	—	—	—	—
35	Lockwasher – Wheel Bearing Nut	60	—	—	—	—	—
36	Gasket – Drive Flange	61	—	—	—	—	—
37	Flange – Axle Drive	62	—	—	—	—	—
38	Snap Ring	63	—	—	—	—	—
39	Hub Cap	64	—	—	—	—	—
40	Lockwasher	66	—	—	—	—	—
41	Hub Assembly	67	—	—	43355	43355	43355
42	Tone Ring (ABS)/Slinger	72	42805	—	44646	44646	44646
43	Spring – Wave Washer	73	—	—	45749	45749	45749

(See next page for additional bills of material)

Jeep Model 30 /181 Front Variable Parts Listing

Kits & Parts - Use With All Applications							
Description & Item Number (Refer to "Exploded View" at the front of this section)			Bills of Material				
			610453	610463	610464	610466	610467
1	Seal – Pinion Oil	10	—	39118	39118	39118	39118
2	End Yoke or Assembly (inc 12)	11	—	2-4-6561-1	—	2-4-6561-1	2-4-6561-1
3	Slinger – End Yoke	12	—	—	—	—	—
4	KIT – Carrier Cover	-	—	707180X	—	707180X	707180X
5	Carrier Cover	15	—	40869	—	40869	40869
6	Gasket/RTV Silicone Sealant	16	—	38615	—	38615	38615
7	Plug – Carrier Cover	17	—	43180	—	43180	43180
8	Gear – Differential (std)	26	—	33213	—	33213	33213
9	Thrustwasher – Diff Gear (std)	28	—	40027	—	40027	40027
10	KIT – Right Knuckle Assembly	-	74507X	74507X	74507X	74507X	74386X
11	KIT – Left Knuckle Assembly	-	74508X	74508X	74508X	74508X	74387X
12	KIT – Socket Assembly	-	706944X	706944X	706944X	706944X	706944X
13	Nut – Slotted	32	43682	43682	43682	43682	43682
14	Adjusting Split Ring	34	40586	40586	40586	40586	40586
15	Socket Assembly	35	40583	40583	40583	40583	40583
16	Nut – Hex Jam / Slotted	36	40584	40584	40584	40584	40584
17	Socket Assembly	37	40916	40916	40916	40916	40916
18	Snap Ring	38	—	—	—	—	—
19	Bolt – Knuckle	39	41027	41027	41027	41027	41027
20	Right Knuckle	40	44322	44322	44322	44322	44181
21	Left Knuckle	41	44323	44323	44323	44323	44182
22	Slinger – Spindle Yoke (Inner)	46	—	46849	—	46849	46849
23	Slinger – Spindle Yoke (Outer)	47	40589	40589	40589	40589	—
24	KIT – Spindle Seal & Bearing	-	—	—	—	—	—
25	KIT – Spindle	-	—	—	—	—	—
26	Oil Seal	48	—	—	—	—	—
27	Oil Seal (block vee)	49	—	—	—	—	—
28	Spacer – Wheel Bearing Spindle	50	—	—	—	—	—
29	Needle Bearing Assembly	51	—	—	—	—	—
30	Spindle – Wheel Bearing	52	—	—	—	—	—
31	KIT – Inner Wheel Bearing	55	—	—	—	—	—
32	KIT – Outer Wheel Bearing	57	—	—	—	—	—
33	Lockwasher – Wheel Bearing	58	—	—	—	—	—
34	Nut – Wheel Bearing	59	—	—	—	—	—
35	Lockwasher – Wheel Bearing Nut	60	—	—	—	—	—
36	Gasket – Drive Flange	61	—	—	—	—	—
37	Flange – Axle Drive	62	—	—	—	—	—
38	Snap Ring	63	—	—	—	—	—
39	Hub Cap	64	—	—	—	—	—
40	Lockwasher	66	—	—	—	—	—
41	Hub Assembly	67	43355	43355	43355	43355	43355
42	Tone Ring (ABS)/Slinger	72	—	—	—	—	—
43	Spring – Wave Washer	73	45749	45749	45749	45749	45749

(See next page for additional bills of material)

Jeep Model 30 /181 Front Variable Parts Listing

Kits & Parts - Use With All Applications							
Description & Item Number (Refer to "Exploded View" at the front of this section)			Bills of Material				
			610468	610469	610472	610500	610501
1	Seal – Pinion Oil	10	44895	44895	—	39118	39118
2	End Yoke or Assembly (inc 12)	11	2-4-6561-1	2-4-6561-1	—	—	—
3	Slinger – End Yoke	12	—	—	—	—	—
4	KIT – Carrier Cover	-	707180X	707180X	—	—	—
5	Carrier Cover	15	40869	40869	—	—	—
6	Gasket/RTV Silicone Sealant	16	38615	38615	—	—	—
7	Plug – Carrier Cover	17	43180	43180	—	—	—
8	Gear – Differential (std)	26	33213	33213	—	—	—
9	Thrustwasher – Diff Gear (std)	28	40027	40027	—	—	—
10	KIT – Right Knuckle Assembly	-	74507X	74386X	74386X	74507X	74386X
11	KIT – Left Knuckle Assembly	-	74508X	74387X	74387X	74508X	74387X
12	KIT – Socket Assembly	-	706944X	706944X	706944X	706944X	706944X
13	Nut – Slotted	32	43682	43682	43682	43682	43682
14	Adjusting Split Ring	34	40586	40586	40586	40586	40586
15	Socket Assembly	35	40583	40583	40583	40583	40583
16	Nut – Hex Jam / Slotted	36	40584	40584	40584	40584	40584
17	Socket Assembly	37	40916	40916	40916	40916	40916
18	Snap Ring	38	—	—	—	—	—
19	Bolt – Knuckle	39	41027	41027	41027	41027	41027
20	Right Knuckle	40	44322	44181	44181	44322	44181
21	Left Knuckle	41	44323	44182	44182	44323	44182
22	Slinger – Spindle Yoke (Inner)	46	46849	46849	—	—	—
23	Slinger – Spindle Yoke (Outer)	47	46988	—	—	40589	—
24	KIT – Spindle Seal & Bearing	-	—	—	—	—	—
25	KIT – Spindle	-	—	—	—	—	—
26	Oil Seal	48	—	—	—	—	—
27	Oil Seal (block vee)	49	—	—	—	—	—
28	Spacer – Wheel Bearing Spindle	50	—	—	—	—	—
29	Needle Bearing Assembly	51	—	—	—	—	—
30	Spindle – Wheel Bearing	52	—	—	—	—	—
31	KIT – Inner Wheel Bearing	55	—	—	—	—	—
32	KIT – Outer Wheel Bearing	57	—	—	—	—	—
33	Lockwasher – Wheel Bearing	58	—	—	—	—	—
34	Nut – Wheel Bearing	59	—	—	—	—	—
35	Lockwasher – Wheel Bearing Nut	60	—	—	—	—	—
36	Gasket – Drive Flange	61	—	—	—	—	—
37	Flange – Axle Drive	62	—	—	—	—	—
38	Snap Ring	63	—	—	—	—	—
39	Hub Cap	64	—	—	—	—	—
40	Lockwasher	66	—	—	—	—	—
41	Hub Assembly	67	43355	43355	43355	43355	43355
42	Tone Ring (ABS)/Slinger	72	—	44646	44646	—	44646
43	Spring – Wave Washer	73	45749	45749	45749	45749	45749

(See next page for additional bills of material)

Jeep Model 30 /181 Front Variable Parts Listing

Kits & Parts - Use With All Applications							
Description & Item Number (Refer to "Exploded View" at the front of this section)			Bills of Material				
			610502	610503	610504	610505	610506
1	Seal – Pinion Oil	10	39118	39118	39118	39118	39118
2	End Yoke or Assembly (inc 12)	11	2-4-6561-1	2-4-6561-1	2-4-6561-1	2-4-6561-1	—
3	Slinger – End Yoke	12	—	—	—	—	—
4	KIT – Carrier Cover	-	707180X	707180X	707180X	707180X	—
5	Carrier Cover	15	40869	40869	40689	40869	—
6	Gasket/RTV Silicone Sealant	16	38615	38615	38615	38615	—
7	Plug – Carrier Cover	17	43180	43180	43180	43180	—
8	Gear – Differential (std)	26	33213	33213	33213	33213	—
9	Thrustwasher – Diff Gear (std)	28	40027	40027	40027	40027	—
10	KIT – Right Knuckle Assembly	-	74507X	74386X	74507X	74386X	74507X
11	KIT – Left Knuckle Assembly	-	74508X	74387X	74508X	74387X	74508X
12	KIT – Socket Assembly	-	706944X	706944X	706944X	706944X	706944X
13	Nut – Slotted	32	43682	43682	43682	43682	43682
14	Adjusting Split Ring	34	40586	40586	40586	40586	40586
15	Socket Assembly	35	40583	40583	40583	40583	40583
16	Nut – Hex Jam / Slotted	36	40584	40584	40584	40584	40584
17	Socket Assembly	37	40916	40916	40916	40916	40916
18	Snap Ring	38	—	—	—	—	—
19	Bolt – Knuckle	39	40127	41027	41027	41027	41027
20	Right Knuckle	40	44322	44181	44322	44181	44322
21	Left Knuckle	41	44323	44182	44323	44182	44323
22	Slinger – Spindle Yoke (Inner)	46	46849	46849	46849	46849	—
23	Slinger – Spindle Yoke (Outer)	47	40589	—	40589	—	—
24	KIT – Spindle Seal & Bearing	-	—	—	—	—	—
25	KIT – Spindle	-	—	—	—	—	—
26	Oil Seal	48	—	—	—	—	—
27	Oil Seal (block vee)	49	—	—	—	—	—
28	Spacer – Wheel Bearing Spindle	50	—	—	—	—	—
29	Needle Bearing Assembly	51	—	—	—	—	—
30	Spindle – Wheel Bearing	52	—	—	—	—	—
31	KIT – Inner Wheel Bearing	55	—	—	—	—	—
32	KIT – Outer Wheel Bearing	57	—	—	—	—	—
33	Lockwasher – Wheel Bearing	58	—	—	—	—	—
34	Nut – Wheel Bearing	59	—	—	—	—	—
35	Lockwasher – Wheel Bearing Nut	60	—	—	—	—	—
36	Gasket – Drive Flange	61	—	—	—	—	—
37	Flange – Axle Drive	62	—	—	—	—	—
38	Snap Ring	63	—	—	—	—	—
39	Hub Cap	64	—	—	—	—	—
40	Lockwasher	66	—	—	—	—	—
41	Hub Assembly	67	43355	43355	43355	43355	43355
42	Tone Ring (ABS)/Slinger	72	—	44646	—	44646	—
43	Spring – Wave Washer	73	45749	45749	45749	45749	45749

(See next page for additional bills of material)

Jeep Model 30 /181 Front Variable Parts Listing

Kits & Parts - Use With All Applications							
Description & Item Number (Refer to "Exploded View" at the front of this section)			Bills of Material				
			610507	610528	610557	610558	610667
1	Seal – Pinion Oil	10	39118	39118	39118	39118	—
2	End Yoke or Assembly (inc 12)	11	—	2-4-6561-1	2-4-6561-1	2-4-6561-1	—
3	Slinger – End Yoke	12	—	—	—	—	—
4	KIT – Carrier Cover	-	—	707180X	707180X	707180X	—
5	Carrier Cover	15	—	40869	40869	40869	—
6	Gasket/RTV Silicone Sealant	16	—	38615	38615	38615	—
7	Plug – Carrier Cover	17	—	43180	43180	43180	—
8	Gear – Differential (std)	26	—	33213	33213	33213	—
9	Thrustwasher – Diff Gear (std)	28	—	40027	40027	40027	—
10	KIT – Right Knuckle Assembly	-	74386X	74386X	74507X	74386X	74507X
11	KIT – Left Knuckle Assembly	-	74387X	74387X	74508X	74387X	74508X
12	KIT – Socket Assembly	-	706944X	706944X	706944X	706944X	706944X
13	Nut – Slotted	32	43682	43682	43682	43682	43682
14	Adjusting Split Ring	34	40586	40586	40586	40586	40586
15	Socket Assembly	35	40583	40583	40583	40583	40583
16	Nut – Hex Jam / Slotted	36	40584	40584	40584	40584	40584
17	Socket Assembly	37	40916	40916	40916	40916	40916
18	Snap Ring	38	—	—	—	—	—
19	Bolt – Knuckle	39	41027	41027	41027	41027	41027
20	Right Knuckle	40	44181	44181	44322	44181	44322
21	Left Knuckle	41	44182	44182	44323	44182	44323
22	Slinger – Spindle Yoke (Inner)	46	—	46849	46849	46849	—
23	Slinger – Spindle Yoke (Outer)	47	—	—	40589	—	46988
24	KIT – Spindle Seal & Bearing	-	—	—	—	—	—
25	KIT – Spindle	-	—	—	—	—	—
26	Oil Seal	48	—	—	—	—	—
27	Oil Seal (block vee)	49	—	—	—	—	—
28	Spacer – Wheel Bearing Spindle	50	—	—	—	—	—
29	Needle Bearing Assembly	51	—	—	—	—	—
30	Spindle – Wheel Bearing	52	—	—	—	—	—
31	KIT – Inner Wheel Bearing	55	—	—	—	—	—
32	KIT – Outer Wheel Bearing	57	—	—	—	—	—
33	Lockwasher – Wheel Bearing	58	—	—	—	—	—
34	Nut – Wheel Bearing	59	—	—	—	—	—
35	Lockwasher – Wheel Bearing Nut	60	—	—	—	—	—
36	Gasket – Drive Flange	61	—	—	—	—	—
37	Flange – Axle Drive	62	—	—	—	—	—
38	Snap Ring	63	—	—	—	—	—
39	Hub Cap	64	—	—	—	—	—
40	Lockwasher	66	—	—	—	—	—
41	Hub Assembly	67	43355	43355	43355	43355	43355
42	Tone Ring (ABS)/Slinger	72	—	44646	—	44646	—
43	Spring – Wave Washer	73	45749	45749	45749	45749	45749

(See next page for additional bills of material)

Jeep Model 30 /181 Front Variable Parts Listing

Kits & Parts - Use With All Applications							
Description & Item Number (Refer to "Exploded View" at the front of this section)			Bills of Material				
			610668	610669	610670	610671	610672
1	Seal – Pinion Oil	10	—	—	—	44895	44895
2	End Yoke or Assembly (inc 12)	11	—	—	—	2-4-6561-1	2-4-6561-1
3	Slinger – End Yoke	12	—	—	—	—	—
4	KIT – Carrier Cover	-	—	—	—	707180X	707180X
5	Carrier Cover	15	—	—	—	40869	40869
6	Gasket/RTV Silicone Sealant	16	—	—	—	38615	38615
7	Plug – Carrier Cover	17	—	—	—	43180	43180
8	Gear – Differential (std)	26	—	—	—	33213	33213
9	Thrustwasher – Diff Gear (std)	28	—	—	—	40027	40027
10	KIT – Right Knuckle Assembly	-	74386X	74507X	74386X	74507X	74386X
11	KIT – Left Knuckle Assembly	-	74387X	74508X	74387X	74508X	74387X
12	KIT – Socket Assembly	-	706944X	706944X	706944X	706944X	706944X
13	Nut – Slotted	32	43682	43682	43682	43682	43682
14	Adjusting Split Ring	34	40586	40586	40586	40586	40586
15	Socket Assembly	35	40583	40583	40583	40583	40583
16	Nut – Hex Jam / Slotted	36	40584	40584	40584	40584	40584
17	Socket Assembly	37	40916	40916	40916	40916	40916
18	Snap Ring	38	—	—	—	—	—
19	Bolt – Knuckle	39	41027	41027	41027	41027	41027
20	Right Knuckle	40	44181	44322	44181	44322	44181
21	Left Knuckle	41	44182	44323	44182	44323	44182
22	Slinger – Spindle Yoke (Inner)	46	—	—	—	46849	46849
23	Slinger – Spindle Yoke (Outer)	47	—	46988	—	46988	—
24	KIT – Spindle Seal & Bearing	-	—	—	—	—	—
25	KIT – Spindle	-	—	—	—	—	—
26	Oil Seal	48	—	—	—	—	—
27	Oil Seal (block vee)	49	—	—	—	—	—
28	Spacer – Wheel Bearing Spindle	50	—	—	—	—	—
29	Needle Bearing Assembly	51	—	—	—	—	—
30	Spindle – Wheel Bearing	52	—	—	—	—	—
31	KIT – Inner Wheel Bearing	55	—	—	—	—	—
32	KIT – Outer Wheel Bearing	57	—	—	—	—	—
33	Lockwasher – Wheel Bearing	58	—	—	—	—	—
34	Nut – Wheel Bearing	59	—	—	—	—	—
35	Lockwasher – Wheel Bearing Nut	60	—	—	—	—	—
36	Gasket – Drive Flange	61	—	—	—	—	—
37	Flange – Axle Drive	62	—	—	—	—	—
38	Snap Ring	63	—	—	—	—	—
39	Hub Cap	64	—	—	—	—	—
40	Lockwasher	66	—	—	—	—	—
41	Hub Assembly	67	43355	43355	43355	43355	43355
42	Tone Ring (ABS)/Slinger	72	44646	—	44646	—	44646
43	Spring – Wave Washer	73	45749	45749	45749	45749	45749

(See next page for additional bills of material)

Jeep Model 30 /181 Front Variable Parts Listing

Kits & Parts - Use With All Applications							
Description & Item Number (Refer to "Exploded View" at the front of this section)			Bills of Material				
			610673	610674	610675	610676	610677
1	Seal – Pinion Oil	10	44895	44895	44895	44895	44895
2	End Yoke or Assembly (inc 12)	11	2-4-6561-1	2-4-6561-1	2-4-6561-1	2-4-6561-1	2-4-6561-1
3	Slinger – End Yoke	12	—	—	—	—	—
4	KIT – Carrier Cover	-	707180X	707180X	707180X	707180X	707180X
5	Carrier Cover	15	40869	40869	40869	40869	40869
6	Gasket/RTV Silicone Sealant	16	38615	38615	38615	38615	38615
7	Plug – Carrier Cover	17	43180	43180	43180	43180	43180
8	Gear – Differential (std)	26	33213	33213	33213	33213	33213
9	Thrustwasher – Diff Gear (std)	28	40027	40027	40027	40027	40027
10	KIT – Right Knuckle Assembly	-	74507X	74386X	74507X	74386X	74507X
11	KIT – Left Knuckle Assembly	-	74508X	74387X	74508X	74387X	74508X
12	KIT – Socket Assembly	-	706944X	706944X	706944X	706944X	706944X
13	Nut – Slotted	32	43682	43682	43682	43682	43682
14	Adjusting Split Ring	34	40586	40586	40586	40586	40586
15	Socket Assembly	35	40583	40583	40583	40583	40583
16	Nut – Hex Jam / Slotted	36	40584	40584	40584	40584	40584
17	Socket Assembly	37	40916	40916	40916	40916	40916
18	Snap Ring	38	—	—	—	—	—
19	Bolt – Knuckle	39	41027	41027	41027	41027	41027
20	Right Knuckle	40	44322	44181	44322	44181	44322
21	Left Knuckle	41	44323	44182	44323	44182	44323
22	Slinger – Spindle Yoke (Inner)	46	46849	—	46849	46849	46849
23	Slinger – Spindle Yoke (Outer)	47	46988	46849	46988	—	46988
24	KIT – Spindle Seal & Bearing	-	—	—	—	—	—
25	KIT – Spindle	-	—	—	—	—	—
26	Oil Seal	48	—	—	—	—	—
27	Oil Seal (block vee)	49	—	—	—	—	—
28	Spacer – Wheel Bearing Spindle	50	—	—	—	—	—
29	Needle Bearing Assembly	51	—	—	—	—	—
30	Spindle – Wheel Bearing	52	—	—	—	—	—
31	KIT – Inner Wheel Bearing	55	—	—	—	—	—
32	KIT – Outer Wheel Bearing	57	—	—	—	—	—
33	Lockwasher – Wheel Bearing	58	—	—	—	—	—
34	Nut – Wheel Bearing	59	—	—	—	—	—
35	Lockwasher – Wheel Bearing Nut	60	—	—	—	—	—
36	Gasket – Drive Flange	61	—	—	—	—	—
37	Flange – Axle Drive	62	—	—	—	—	—
38	Snap Ring	63	—	—	—	—	—
39	Hub Cap	64	—	—	—	—	—
40	Lockwasher	66	—	—	—	—	—
41	Hub Assembly	67	43355	43355	43355	43355	43355
42	Tone Ring/Slinger	72	—	44646	—	44646	—
43	Spring – Wave Washer	73	45749	45749	45749	45749	45749

(See next page for additional bills of material)

Jeep Model 30 /181 Front Variable Parts Listing

Kits & Parts - Use With All Applications							
Description & Item Number (Refer to "Exploded View" at the front of this section)			Bills of Material				
			610678	610758	610759	610760	610761
1	Seal – Pinion Oil	10	44895	44895	44895	44895	44895
2	End Yoke or Assembly (inc 12)	11	2-4-6561-1	2-4-6561-1	2-4-6561-1	2-4-6561-1	2-4-6561-1
3	Slinger – End Yoke	12	—	—	—	—	—
4	KIT – Carrier Cover	-	707180X	707180X	707180X	707180X	707180X
5	Carrier Cover	15	40869	40869	40869	40869	40869
6	Gasket/RTV Silicone Sealant	16	38615	38615	38615	38615	38615
7	Plug – Carrier Cover	17	43180	43180	43180	43180	43180
8	Gear – Differential (std)	26	33213	33213	33213	33213	33213
9	Thrustwasher – Diff Gear (std)	28	40027	40027	40027	40027	40027
10	KIT – Right Knuckle Assembly	-	74386X	74507X	74386X	74507X	74386X
11	KIT – Left Knuckle Assembly	-	74387X	74508X	74387X	74508X	74387X
12	KIT – Socket Assembly	-	706944X	706944X	706944X	706944X	706944X
13	Nut – Slotted	32	43682	43682	43682	43682	43682
14	Adjusting Split Ring	34	40586	40586	40586	40586	40586
15	Socket Assembly	35	40583	40583	40583	40583	40583
16	Nut – Hex Jam / Slotted	36	40584	40584	40584	40584	40584
17	Socket Assembly	37	40916	40916	40916	40916	40916
18	Snap Ring	38	—	—	—	—	—
19	Bolt – Knuckle	39	41027	41027	41027	41027	41027
20	Right Knuckle	40	44181	44322	44181	44322	44181
21	Left Knuckle	41	44182	44323	44182	44323	44182
22	Slinger – Spindle Yoke (Inner)	46	46849	46849	46849	46849	46849
23	Slinger – Spindle Yoke (Outer)	47	—	46988	—	46988	—
24	KIT – Spindle Seal & Bearing	-	—	—	—	—	—
25	KIT – Spindle	-	—	—	—	—	—
26	Oil Seal	48	—	—	—	—	—
27	Oil Seal (block vee)	49	—	—	—	—	—
28	Spacer – Wheel Bearing Spindle	50	—	—	—	—	—
29	Bearing Assembly – Needle	51	—	—	—	—	—
30	Spindle – Wheel Bearing	52	—	—	—	—	—
31	KIT – Inner Wheel Bearing	55	—	—	—	—	—
32	KIT – Outer Wheel Bearing	57	—	—	—	—	—
33	Lockwasher – Wheel Bearing	58	—	—	—	—	—
34	Nut – Wheel Bearing	59	—	—	—	—	—
35	Lockwasher – Wheel Bearing Nut	60	—	—	—	—	—
36	Gasket – Drive Flange	61	—	—	—	—	—
37	Flange – Axle Drive	62	—	—	—	—	—
38	Snap Ring	63	—	—	—	—	—
39	Hub Cap	64	—	—	—	—	—
40	Lockwasher	66	—	—	—	—	—
41	Hub Assembly	67	43355	49773	49773	49773	49773
42	Tone Ring/Slinger	72	44646	—	44646	—	44646
43	Spring – Wave Washer	73	45749	45749	45749	45749	45749

(See next page for additional bills of material)

Jeep Model 30 /181 Front Variable Parts Listing

Kits & Parts - Use With All Applications							
Description & Item Number (Refer to "Exploded View" at the front of this section)			Bills of Material				
			610762	610763	610764	610765	610766
1	Seal – Pinion Oil	10	44895	44895	44895	44895	—
2	End Yoke or Assembly (inc 12)	11	2-4-6561-1	2-4-6561-1	2-4-6561-1	2-4-6561-1	—
3	Slinger – End Yoke	12	—	—	—	—	—
4	KIT – Carrier Cover	-	707180X	707180X	707180X	707180X	—
5	Carrier Cover	15	40869	40869	40869	40869	—
6	Gasket/RTV Silicone Sealant	16	38615	38615	38615	38615	—
7	Plug – Carrier Cover	17	43180	43180	43180	43180	—
8	Gear – Differential (std)	26	33213	33213	33213	33213	—
9	Thrustwasher – Diff Gear (std)	28	40027	40027	40027	40027	—
10	KIT – Right Knuckle Assembly	-	74507X	74386X	74507X	74386X	74507X
11	KIT – Left Knuckle Assembly	-	74508X	74387X	74508X	74387X	74508X
12	KIT – Socket Assembly	-	706944X	706944X	706944X	706944X	706944X
13	Nut – Slotted	32	43682	43682	43682	43682	43682
14	Adjusting Split Ring	34	40586	40586	40586	40586	40586
15	Socket Assembly	35	40583	40583	40583	40583	40583
16	Nut – Hex Jam / Slotted	36	40584	40584	40584	40584	40584
17	Socket Assembly	37	40916	40916	40916	40916	40916
18	Snap Ring	38	—	—	—	—	—
19	Bolt – Knuckle	39	41027	41027	41027	41027	41027
20	Right Knuckle	40	44322	44181	44322	44181	44322
21	Left Knuckle	41	44323	44182	44323	44182	44323
22	Slinger – Spindle Yoke (Inner)	46	46849	46849	46849	46849	—
23	Slinger – Spindle Yoke (Outer)	47	46988	—	46988	—	46988
24	KIT – Spindle Seal & Bearing	-	—	—	—	—	—
25	KIT – Spindle	-	—	—	—	—	—
26	Oil Seal	48	—	—	—	—	—
27	Oil Seal (block vee)	49	—	—	—	—	—
28	Spacer – Wheel Bearing Spindle	50	—	—	—	—	—
29	Bearing Assembly – Needle	51	—	—	—	—	—
30	Spindle – Wheel Bearing	52	—	—	—	—	—
31	KIT – Inner Wheel Bearing	55	—	—	—	—	—
32	KIT – Outer Wheel Bearing	57	—	—	—	—	—
33	Lockwasher – Wheel Bearing	58	—	—	—	—	—
34	Nut – Wheel Bearing	59	—	—	—	—	—
35	Lockwasher – Wheel Bearing Nut	60	—	—	—	—	—
36	Gasket – Drive Flange	61	—	—	—	—	—
37	Flange – Axle Drive	62	—	—	—	—	—
38	Snap Ring	63	—	—	—	—	—
39	Hub Cap	64	—	—	—	—	—
40	Lockwasher	66	—	—	—	—	—
41	Hub Assembly	67	49773	49773	49773	49773	49773
42	Tone Ring/Slinger	72	—	44646	—	44646	—
43	Spring – Wave Washer	73	45749	45749	45749	45749	45749

(See next page for additional bills of material)

Jeep Model 30 /181 Front Variable Parts Listing

Kits & Parts - Use With All Applications							
Description & Item Number (Refer to "Exploded View" at the front of this section)			Bills of Material				
			610767	610768	610769	610849	610850
1	Seal – Pinion Oil	10	—	—	—	44895	44895
2	End Yoke or Assembly (inc 12)	11	—	—	—	2-4-6561-1	2-4-6561-1
3	Slinger – End Yoke	12	—	—	—	—	—
4	KIT – Carrier Cover	-	—	—	—	707180X	707180X
5	Carrier Cover	15	—	—	—	40869	40869
6	Gasket/RTV Silicone Sealant	16	—	—	—	38615	38615
7	Plug – Carrier Cover	17	—	—	—	43180	43180
8	Gear – Differential (std)	26	—	—	—	33213	33213
9	Thrustwasher – Diff Gear (std)	28	—	—	—	40027	40027
10	KIT – Right Knuckle Assembly	-	74386X	74507X	74386X	74507X	74386X
11	KIT – Left Knuckle Assembly	-	74387X	74508X	74387X	74508X	74387X
12	KIT – Socket Assembly	-	706944X	706944X	706944X	706944X	706944X
13	Nut – Slotted	32	43682	43682	43682	43682	43682
14	Adjusting Split Ring	34	40586	40586	40586	40586	40586
15	Socket Assembly	35	40583	40583	40583	40583	40583
16	Nut – Hex Jam / Slotted	36	40584	40584	40584	40584	40584
17	Socket Assembly	37	40916	40916	40916	40916	40916
18	Snap Ring	38	—	—	—	—	—
19	Bolt – Knuckle	39	41027	41027	41027	41027	41027
20	Right Knuckle	40	44181	44322	44181	44322	44181
21	Left Knuckle	41	44182	44323	44182	44323	44182
22	Slinger-Spindle Yoke (Inner)	46	—	—	—	46849	46849
23	Slinger – Spindle Yoke (Outer)	47	—	46988	—	46988	—
24	KIT – Spindle Seal & Bearing	-	—	—	—	—	—
25	KIT – Spindle	-	—	—	—	—	—
26	Oil Seal	48	—	—	—	—	—
27	Oil Seal (block vee)	49	—	—	—	—	—
28	Spacer – Wheel Bearing Spindle	50	—	—	—	—	—
29	Needle Bearing Assembly	51	—	—	—	—	—
30	Spindle – Wheel Bearing	52	—	—	—	—	—
31	KIT – Inner Wheel Bearing	55	—	—	—	—	—
32	KIT – Outer Wheel Bearing	57	—	—	—	—	—
33	Lockwasher – Wheel Bearing	58	—	—	—	—	—
34	Nut – Wheel Bearing	59	—	—	—	—	—
35	Lockwasher – Wheel Bearing Nut	60	—	—	—	—	—
36	Gasket – Drive Flange	61	—	—	—	—	—
37	Flange – Axle Drive	62	—	—	—	—	—
38	Snap Ring	63	—	—	—	—	—
39	Hub Cap	64	—	—	—	—	—
40	Lockwasher	66	—	—	—	—	—
41	Hub Assembly	67	49773	49773	49773	49773	49773
42	Tone Ring/Slinger	72	44646	—	44646	—	44646
43	Spring – Wave Washer	73	45749	45749	45749	45749	45749

(See next page for additional bills of material)

Jeep Model 30 /181 Front Variable Parts Listing

Kits & Parts - Use With All Applications							
Description & Item Number (Refer to "Exploded View" at the front of this section)			Bills of Material				
			610851	610852	610853	610854	610855
1	Seal – Pinion Oil	10	44895	44895	44895	—	—
2	End Yoke or Assembly (inc 12)	11	2-4-6561-1	2-4-6561-1	2-4-6561-1	—	—
3	Slinger – End Yoke	12	—	—	—	—	—
4	KIT – Carrier Cover	-	707180X	707180X	707180X	—	—
5	Carrier Cover	15	40869	40869	40869	—	—
6	Gasket/RTV Silicone Sealant	16	38615	38615	38615	—	—
7	Plug – Carrier Cover	17	43180	43180	43180	—	—
8	Gear – Differential (std)	26	33213	33213	33213	—	—
9	Thrustwasher – Diff Gear (std)	28	40027	40027	40027	—	—
10	KIT – Right Knuckle Assembly	-	74507X	74386X	74386X	74507X	74386X
11	KIT – Left Knuckle Assembly	-	74508X	74387X	74387X	74508X	74387X
12	KIT – Socket Assembly	-	706944X	706944X	706944X	706944X	706944X
13	Nut – Slotted	32	43682	43682	43682	43682	43682
14	Adjusting Split Ring	34	40586	40586	40586	40586	40586
15	Socket Assembly	35	40583	40583	40583	40583	40583
16	Nut – Hex Jam / Slotted	36	40584	40584	40584	40584	40584
17	Socket Assembly	37	40916	40916	40916	40916	40916
18	Snap Ring	38	—	—	—	—	—
19	Bolt – Knuckle	39	41027	41027	41027	41027	41027
20	Right Knuckle	40	44322	44181	44181	44322	44181
21	Left Knuckle	41	44323	44182	44182	44323	44182
22	Slinger-Spindle Yoke (Inner)	46	46849	46849	46849	—	—
23	Slinger – Spindle Yoke (Outer)	47	46988	—	—	46988	—
24	KIT – Spindle Seal & Bearing	-	—	—	—	—	—
25	KIT – Spindle	-	—	—	—	—	—
26	Oil Seal	48	—	—	—	—	—
27	Oil Seal (block vee)	49	—	—	—	—	—
28	Spacer – Wheel Bearing Spindle	50	—	—	—	—	—
29	Needle Bearing Assembly	51	—	—	—	—	—
30	Spindle – Wheel Bearing	52	—	—	—	—	—
31	KIT – Inner Wheel Bearing	55	—	—	—	—	—
32	KIT – Outer Wheel Bearing	57	—	—	—	—	—
33	Lockwasher – Wheel Bearing	58	—	—	—	—	—
34	Nut – Wheel Bearing	59	—	—	—	—	—
35	Lockwasher – Wheel Bearing Nut	60	—	—	—	—	—
36	Gasket – Drive Flange	61	—	—	—	—	—
37	Flange – Axle Drive	62	—	—	—	—	—
38	Snap Ring	63	—	—	—	—	—
39	Hub Cap	64	—	—	—	—	—
40	Lockwasher	66	—	—	—	—	—
41	Hub Assembly	67	49773	49773	49773	49773	49773
42	Tone Ring/Slinger	72	—	44646	44646	—	44646
43	Spring – Wave Washer	73	45749	45749	45749	45749	45749

(See next page for additional bills of material)