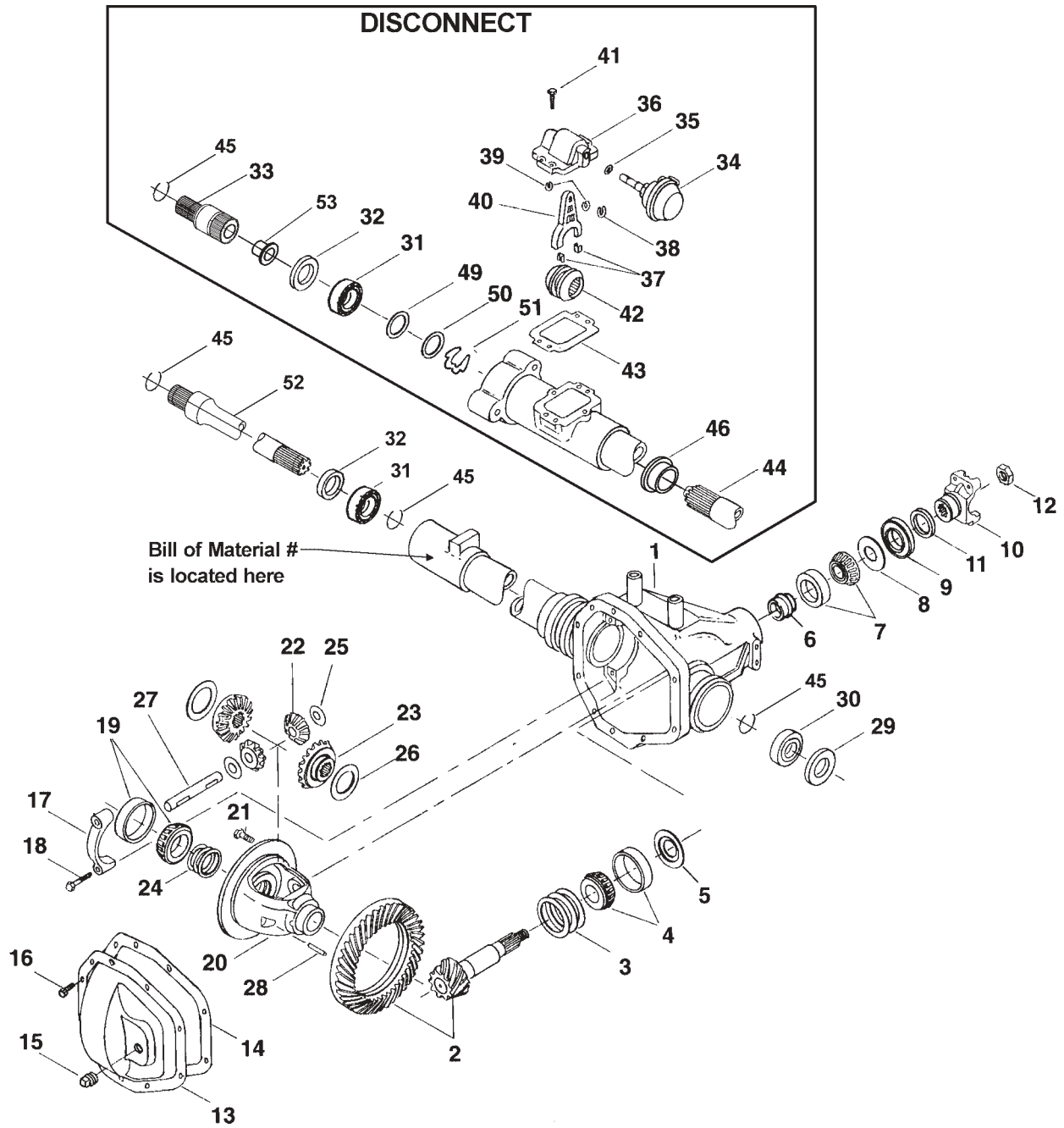


Ford 1995-1998 1/2

**Model 35 /194 Front Axles
with CV Joints for**

**Explorer
Ranger**

Ford Model 35 /194 Front Axles w/CV Joints Exploded View



Ford Model 35 /194 Front Axles w/CV Joints Parts Listing



ITEM NO.	PART NUMBER	DESCRIPTION	ITEM NO.	PART NUMBER	DESCRIPTION
1	— ⁽³⁾	Housing – Axle Service	29	46065	Oil Seal
2	— ⁽¹⁾	Drive Pinion & Gear Assembly	30	566121	Bearing
3	701130X	PKG – Pinion Bearing Shim	31	566063	Bearing
4	707162X	KIT – Inner Pinion Bearing	32	46066	Oil Seal
5	— ⁽²⁾	Baffle – Pinion Oil	33	75117X	Axle Shaft Assembly (disconnect)
6	42102	Collapsible Spacer		75118X	Cover & Motor Assembly (disconnect)
7	706894X	KIT – Outer Pinion Bearing			(inc items 34, 35, 36, 37, 38, 39, 40)
8	42778	Slinger – Outer Pinion Bearing	34	— ⁽⁴⁾	Motor Assembly
9	51501	Seal – Pinion Oil	35	— ⁽⁴⁾	O-Ring
10	2-4-6901-1X	End Yoke Assembly (inc 11)	36	— ⁽⁴⁾	Cover – Disconnect Housing
11	42779	Slinger – End Yoke	37	621059	Clip – Shift Fork
12	44189	Pinion Nut	38	— ⁽⁴⁾	Snap Ring
13	47446	Carrier Cover	39	620979	Snap Ring
14	38615	RTV Silicone Sealant	40	42585	Shift Fork
15	43180	Plug – Carrier Cover	41	46071	Bolt – Cover & Motor Assembly
16	40286-5	Bolt – Carrier Cover (qty 10)	42	42998	Clutch Collar (disconnect)
17	— ⁽⁴⁾	Cap – Differential Bearing	43	46220	Gasket (disconnect)
18	40284-1	Bolt – Differential Bearing	44	46068	Shaft – Output (disconnect)
19	706016X	KIT – Differential Bearing	45	46072	Snap Ring
20	— ⁽⁴⁾	Case – Differential	46	43342	Bushing (disconnect)
21	41221	Bolt – Drive Gear (qty 8)	N.I.	42499-2	Bolt (disconnect)
22	46504	Pinion – Differential	N.I.	46077	Protection Shield (disconnect)
23	46502	Gear – Differential	49	46075	Thrustwasher (disconnect)
24	701004X	PKG – Differential Bearing Shim	50	46076	Thrustwasher (disconnect)
25	34096	Thrustwasher – Differential Pinion	51	46073	Snap Ring (disconnect)
26	— ⁽²⁾	Thrustwasher – Differential Gear	52	80297	Shaft Assembly (non-disconnect)
27	41648	Shaft – Differential	53	43337	Bushing (disconnect)
28	13449	Lock – Differential Shaft			

N.I. = Not Illustrated

- (1) See "Bill of Material Table" on next page
- (2) See "Variable Parts Table" below
- (3) Contact Vehicle Manufacturer
- (4) Not Sold Separately

Variable Parts Listing

Kits & Parts - Use With All Applications						
Description & Item Number (Refer to "Exploded View" on the previous page)			Bills of Material			
			610476	610556 610581 610582 610585	610586	610642 610643 610644 610645
1	Baffle – Pinion Oil	5	—	43599	—	43599
2	Thrustwasher – Differential Gear	26	40027	34095	34095	34095

Ford Model 35 /194 Front Axles w/CV Joints

Bill of Material Table

Axle			Axle Kits				Shaft & Joint Assy.	
Bill of Material	Diff. Type	Ratio	Ring Gear & Pinion Kit ⁽⁷⁾	Differential			Right Hand Shaft Assy.	Left Hand Shaft Assy.
				Case Assy. Kit ⁽⁸⁾	Case Kit	Inner Parts Kit		
1995 Explorer - Disconnect- CV								
610476-1	Standard	3.27	707359-1X	707342X	707360X	707343X	— ⁽³⁾	— ⁽³⁾
610476-2	Standard	3.55	707359-2X	707342X	707360X	707343X	— ⁽³⁾	— ⁽³⁾
610476-3	Standard	3.73	707359-3X	707342X	707360X	707343X	— ⁽³⁾	— ⁽³⁾
610476-4	Standard	4.10	707359-4X	707342X	707360X	707343X	— ⁽³⁾	— ⁽³⁾
1995-96 Explorer - Disconnect- CV								
610581-1	Standard	3.27	707359-1X	707378X	707360X	707379X	— ⁽³⁾	— ⁽³⁾
610581-2	Standard	3.55	707359-2X	707378X	707360X	707379X	— ⁽³⁾	— ⁽³⁾
610581-3	Standard	3.73	707359-3X	707378X	707360X	707379X	— ⁽³⁾	— ⁽³⁾
610581-4	Standard	4.10	707359-4X	707378X	707360X	707379X	— ⁽³⁾	— ⁽³⁾
610582-1	Standard	3.27	707359-1X	707378X	707360X	707379X	— ⁽³⁾	— ⁽³⁾
610582-2	Standard	3.55	707359-2X	707378X	707360X	707379X	— ⁽³⁾	— ⁽³⁾
610582-3	Standard	3.73	707359-3X	707378X	707360X	707379X	— ⁽³⁾	— ⁽³⁾
610582-4	Standard	4.10	707359-4X	707378X	707360X	707379X	— ⁽³⁾	— ⁽³⁾
1996 Explorer - Non-Disconnect - CV								
610585-1	Standard	3.73	707359-3X	707378X	707360X	707379X	— ⁽³⁾	— ⁽³⁾
610586-1	Standard	3.73	707359-3X	707378X	707360X	707379X	— ⁽³⁾	— ⁽³⁾
1997 1/2 Explorer - Non-Disconnect - CV								
610644-1	Standard	3.27	707359-1X	707378X	707360X	707379X	— ⁽³⁾	— ⁽³⁾
610644-2	Standard	3.55	707359-2X	707378X	707360X	707379X	— ⁽³⁾	— ⁽³⁾
610644-3	Standard	3.73	707359-3X	707378X	707360X	707379X	— ⁽³⁾	— ⁽³⁾
610644-4	Standard	4.10	707359-4X	707378X	707360X	707379X	— ⁽³⁾	— ⁽³⁾
1998 Explorer - Non-Disconnect - CV								
610556-1	Standard	3.27	707359-1X	707378X	707360X	707379X	— ⁽³⁾	— ⁽³⁾
610556-3	Standard	3.73	707359-3X	707378X	707360X	707379X	— ⁽³⁾	— ⁽³⁾
610556-4	Standard	4.10	707359-4X	707378X	707360X	707379X	— ⁽³⁾	— ⁽³⁾
610556-5	Standard	4.56	707359-5X	707378X	707360X	707379X	— ⁽³⁾	— ⁽³⁾
1998-98 1/2 Explorer/Ranger - Non-Disconnect - CV								
610642-1	Standard	3.27	707359-1X	707378X	707360X	707379X	— ⁽³⁾	— ⁽³⁾
610642-2	Standard	3.55	707359-2X	707378X	707360X	707379X	— ⁽³⁾	— ⁽³⁾
610642-3	Standard	3.73	707359-3X	707378X	707360X	707379X	— ⁽³⁾	— ⁽³⁾
610642-4	Standard	4.10	707359-4X	707378X	707360X	707379X	— ⁽³⁾	— ⁽³⁾
1998-98 1/2 Explorer - Non-Disconnect - CV								
610643-1	Standard	3.27	707359-1X	707378X	707360X	707379X	— ⁽³⁾	— ⁽³⁾
610643-3	Standard	3.73	707359-3X	707378X	707360X	707379X	— ⁽³⁾	— ⁽³⁾
610643-4	Standard	4.10	707359-4X	707378X	707360X	707379X	— ⁽³⁾	— ⁽³⁾
610643-5	Standard	4.56	707359-5X	707378X	707360X	707379X	— ⁽³⁾	— ⁽³⁾
610645-1	Standard	3.27	707359-1X	707378X	707360X	707379X	— ⁽³⁾	— ⁽³⁾
610645-2	Standard	3.55	707359-2X	707378X	707360X	707379X	— ⁽³⁾	— ⁽³⁾
610645-3	Standard	3.73	707359-3X	707378X	707360X	707379X	— ⁽³⁾	— ⁽³⁾
610645-4	Standard	4.10	707359-4X	707378X	707360X	707379X	— ⁽³⁾	— ⁽³⁾

(3) Contact Vehicle Manufacturer
 (7) See Ring Gear & Pinion Kits in XGI Catalog for ratio & tooth combinations.
 (8) See Differential Case Assy Kits in XGI Catalog for spline data & ratios.